



Alfa 147





## Alfa 147

With a host of prestige awards to its name, the Alfa 147 is the very embodiment of the Alfa Romeo spirit. Uncompromising in performance and unparalleled in driving pleasure, this remarkable hatchback has captured the hearts and minds of discerning drivers across Europe with its combination of dynamism, versatility and striking looks.

Always regarded as a masterpiece of design and desirability, the Alfa 147 is renown for its distinctiveness and verve. At the front, the striking headlight clusters slant inwards to accentuate the prominent shield, with it's five metal bars topped by the famous Alfa Romeo badge. Meanwhile at the other end the rear light clusters and bumper cut out maintain an elegant but sporty design. Looked on as a whole, the Alfa 147 is a triumph of symmetry and proportion, exuding the pride and passion of design that is uniquely Alfa Romeo.



## Alfa 147



## Design

Updating the styling of an acknowledged classic like the Alfa 147 was a somewhat daunting prospect for the team at Centro Stile, Alfa Romeo's design studio in Milan. However, what they have achieved is nothing less than a 'tour de force' of automotive artistry - lines, shapes and volumes that combine in visual harmony to give it a radical, bold and up-to-the-minute appearance.

Most noticeable is the front end, which sees dramatic front light clusters that result in a sleek, aggressive appearance for the car. In the centre, a prominent shield is the focal point of two converging bonnet contours that intensify the sense of speed and performance, whilst the spoiler section endows the car with a powerful street presence. At the side, flared wheel arches and wide wheels confirm the road holding capabilities of the Alfa 147, and at the back there are the perfectly designed rear lights and bumper.







## Alfa 147 Comfort

Alfa Romeo's designers have a unique appreciation for those principles and criteria that serve to promote comfort and relaxation. In the Alfa 147 this starts with the driver's seat, which adjusts for height, reach and rake and can also be specified with lumbar support. This in conjunction with a steering wheel that can be altered for depth and height ensures the perfect driving position. All of the major controls are located exactly where the driver requires them for easy operation and, on the dashboard, the sporty instrument dials nestle deep in a recessed binnacle for maximum visibility.

Supporting this ergonomic driving environment is the very latest in high-tech equipment. Depending on the version, there's Dual Zone climate control that allows the driver and front seat passenger to select different temperature settings for their individual areas, steering wheel audio/car phone controls, and a state-of-the-art 'infotelematic' console in the middle of the dashboard. In its most advanced form, CONNECT NAV+ gives the driver access to satellite navigation, a hands-free car phone, voice controls and a trip computer - all via a single colour monitor. In addition, at the press of a button, the driver can access help and information on a wide range of subjects from a dedicated Contact Centre.





## Alfa 147 Versatility

Not only is the Alfa 147 stunning to behold, tremendous to drive, and a relaxing environment, it is also an immensely versatile and practical proposition for all those day-to-day activities that confront the modern motorist. Take its load carrying capabilities, for instance. With the rear seats up, there's a generous 292 litres of luggage room, but when these are folded forward, this increases to a cavernous 1042 litres.

Since the rear seat is split 60:40, this allows for awkward sized large objects to be carried with ease, along with one or two passengers in the back, as well.

Abundant storage space is located all around, the front doors contain map pockets and in the dashboard there's an illuminated glove compartment. Meanwhile, for everyday travel, there's plenty of legroom, headroom and elbowroom for all the occupants, both in the front and the rear.



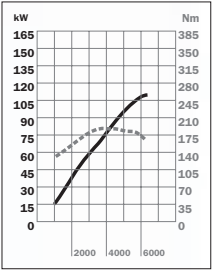


## Alfa 147 Power

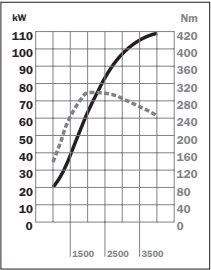
Across the years, Alfa Romeo has gained an unrivalled reputation for engine design. A racing heritage that extends back over 90 years has seen the company produce some of the most revered and groundbreaking power plants in the history of the automobile - a tradition that still thrives today. In the case of 8729 ALFA the Alfa 147, these engines come in both petrol and diesel forms: the 1.6 and 2.0 litre Twin Spark units and the 1.9 litre JTDM and JTDM 16v diesels.

The 1.6 and 2.0 Twin Spark units are amongst the most technologically sophisticated engines in the world, featuring two spark plugs per cylinder, sixteen valves and variable geometry intake manifolds. All this translates into an impressive 120 bhp for the 1.6 T.S, and a potent 150 bhp for the 2.0 T.S.

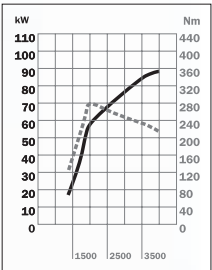
Alternatively there's the smooth and refined 120 bhp 1.9 JTDM or the simply awesome 150 bhp 1.9 JTDM 16v engines, both with their innovative Multijet fuel injection systems - a world first for Alfa Romeo, delivering massive power, huge amounts of torque, and yet at the same time, efficient fuel consumption.



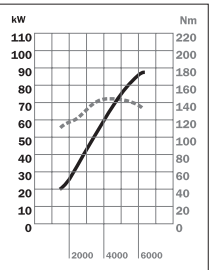
**2.0 TS 150 BHP**  
Total displacement: 1970 cc.  
Four cylinders in line.  
Power: 110 kW (150 BHP) at 6300 rpm.  
Torque: 181 Nm at 3800 rpm.



**1.9 JTDM 16V 150 BHP**  
Total displacement: 1910 cc.  
Four cylinders in line.  
Power: 110 kW (150 BHP) at 4000 rpm.  
Torque: 305 Nm at 2000 rpm.



**1.9 JTDM 120 BHP**  
Power: 88 kW (120 BHP) at 4000 rpm.  
Torque: 280 Nm at 2000 rpm.



**1.6 TS 120 BHP**  
Total displacement: 1598 cc.  
Four cylinders in line.  
Power: 88 kW (120 BHP) at 6200 rpm.  
Torque: 146 Nm at 4200 rpm.





## Alfa 147 Control

At the root of all driving pleasure is the confidence that the driver has in the car's behaviour - its abilities in the areas of roadholding, handling and ride. Here, the Alfa 147 delivers the perfect balance between a comfortable and sporting drive. This is due to the torsional rigidity of its body and its advanced and finely tuned suspension. At the front, Alfa's engineers have opted for a high double wishbone set-up that's similar to the type used on Formula 1 cars.

This ensures that the driving wheels remain vertical when cornering, and thus the tyres maintain maximum contact with the road. At the rear, there's an advanced version of the McPherson strut system. Finally, a revised suspension system has been developed to improve ride comfort, through high levels of stability, ease of handling, vibration damping and the ability to neutralise road irregularities.

To inspire even greater confidence, the Alfa 147 features Bosch ABS with Electronic Brakeforce Distribution (EBD). Brake Assist is then on hand to recognise panic braking and apply the brakes with maximum force. Should the car start to take a bend too quickly, Vehicle Dynamic Control (VDC) standard on 1.9 JTDM 16V and 2.0 T.S models will detect it before the driver does, and compensate for oversteer or understeer by either applying the appropriate brake or reducing power to the front wheels.





## Alfa 147 Safety

Safety was of particular concern to Alfa Romeo's designers and engineers in their development of the Alfa 147. Passenger protection starts with the cabin area itself, which acts as a 'survival cell' in the event of an accident, with side impact bars and special crumple zones built into the overall structure to absorb the forces of a collision. Inside there are six airbags: front ones for the driver and front seat passenger, side airbags located in the front seatbacks to protect their torsos from side impacts, and two window airbags that drop down on either side to protect the occupants' heads.

In addition there are front seatbelts with pre-tensioners and load limiters, 3-point inertia-reel seatbelts for all three rear seats, a collapsible telescopic steering column and a comprehensive fire prevention system (FPS).

Then to ensure maximum security, the Alfa 147 features remote central locking and an alarm system, plus an Alfa Code engine immobiliser and an attrition-type steering lock which prevents the steering column and locking mechanisms from being damaged.





## Alfa 147 Technology

When you sit at the wheel of an Alfa Romeo you enter a whole new world where you can indulge yourself with the very latest high-tech equipment. For instance, there's a state-of-the-art CD player with MP3 reader that's available as an option as well as dual zone automatic climate control that lets the driver and front seat passenger set their own temperatures.

Cruise control is standard on all models and allows the driver to determine a specific speed on the motorway and then sit back and relax. Then there's the optional Climate Pack that provides a rain sensor to automatically activate the windscreen wipers, a pollution sensor to cut off the intake of fumes from outside, and a condensation sensor that prevents the windows from misting up.

To keep the interior clutter-free there's a handy storage compartment in the front central armrest and, for fresh air enthusiasts, there's an optional tilt-sliding electric sunroof. Rear parking sensors can be specified to prevent annoying shunts when reversing and finally remote audio controls are available which allows the driver to keep their hands on the steering wheel while working the radio stereo CD player.





## **Alfa 147** More enjoyment, more control

The Alfa Q2 system is the perfect way to maintain both traction and control, without stopping the fun. It is based on a Torsen mechanical-type limited slip differential, which was until recently the preserve of works race and rally teams.

Its job is to divide the torque between the driving wheels depending on the grip conditions. Combined with the front wishbone suspension, the system ensures particularly effective dynamic control of the vehicle and enhanced driving pleasure.

You will relish the extra stability, safety and confidence delivered by the advanced Q2 system. On the limit and in poor conditions its innovative technology gives you a more intuitive 'feel' for the traction of the driven wheels and ensures that all that power is turned into acceleration, not wheelspin.

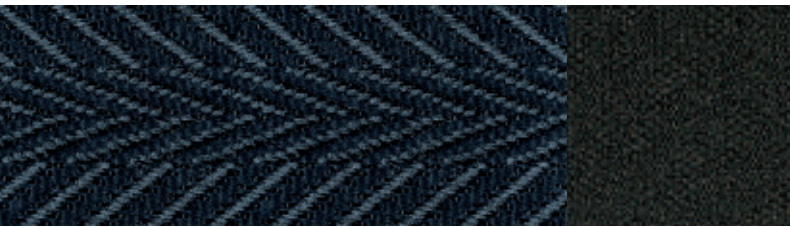








Alfa 147 INTERIOR  
Sports Cloth



169

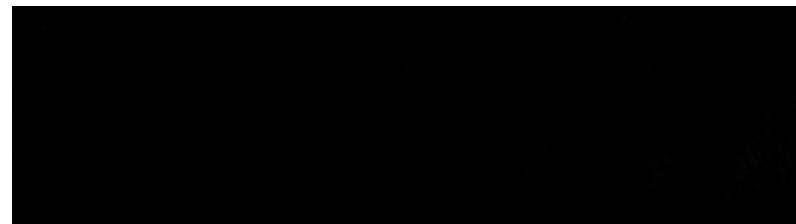
Black

Alfatex®



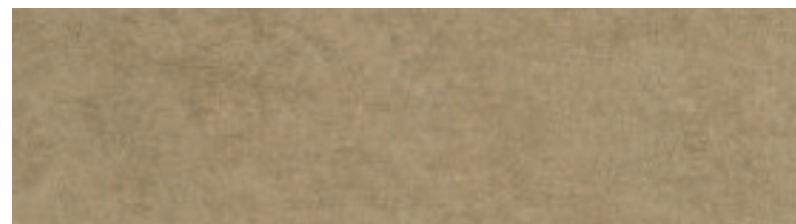
157

Grey



145

Black



165

Beige

Sports Leather



508

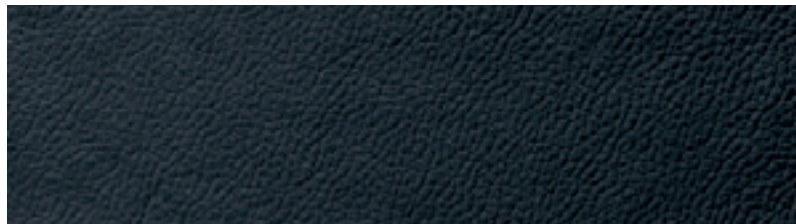
Black

Leather



401

Red



402

Black



445

Sahara Beige



406

Grey

Alfa 147 EXTERIOR

296

Ghiaccio White

601

Black

185/b

Giuletta Red

289

Alfa Red

203/b

Montecarlo Blue

565

Alfa Silver

567

Oltremare Blue

568

Titanio Grey

583

Rubino Red

639

Lipari Grey

651

Stromboli Grey

876

Carbonio Black



# Alfa 147 Body colours and upholstery

	Standard on Turismo				Standard on Q2	Optional on Turismo & standard on Lusso				Optional on all
Upholstery type	Sports Cloth <sup>(1)</sup>	Alfatex				Leather				Sports Leather <sup>(4)</sup>
Fascia colour	Black/Black	Black/Black	Black/Beige <sup>(2)</sup>	Black/Grey <sup>(3)</sup>	Sports Cloth	Black/Black	Black/Black	Black/Beige <sup>(2)</sup>	Black/Black	Black/Black
Seat colour	Black	Black	Biege	Grey	Black	Red	Black	Sahara Beige	Grey	Black
Code	169	145	165	157	294	401	402	445	406	508
Background instrument colour	Black	Black	Light Grey	Light Grey	Black	Black	Black	Light Grey	Black	Black
SOLID										
296 White Ghiaccio	●	●	-	-	-	○	●	○	○	●
601 Black	○	○	○	○	○	○	○	○	○	●
SPECIAL (opt 5B2)										
185/b Giulietta Red	●	●	○	○	●	-	●	○	○	●
289 Alfa Red	●	●	○	○	●	-	●	○	○	●
METALLIC (opt 210)										
203 Montecarlo Blue	●	●	-	○	●	-	●	●	●	●
565 Alfa Silver	●	●	○	●	○	○	○	●	-	○
567 Oltremare Blue	○	○	●	●	○	-	○	○	○	○
583 Rubino Red	●	●	○	●	●	-	●	●	●	●
568 Titanio Grey	●	●	●	○	○	●	●	○	○	○
639 Lipari Grey	●	●	●	○	○	●	●	○	○	○
651 Stromboli Grey	○	○	●	○	●	○	●	○	●	●
876 Carbonio Black	○	○	●	○	●	○	○	○	○	●

● = Recommended Match    ○ = Available    - = Not available

<sup>(1)</sup> Option 727  
<sup>(2)</sup> Includes beige interior with beige seats, console and seat belts  
<sup>(3)</sup> Includes grey interior with seats and console  
<sup>(4)</sup> Option 788  
\* Includes body coloured wing mirrors

All information, descriptions and illustrations are given solely as a guide. Actual product specifications may differ due to manufacturing requirements. Alfa Romeo

reserves the right to make any changes to its products it considers necessary. Some of the equipment described and/or photographed in this brochure are options.

Alfa Romeo - Marketing - 04.9.4764.52 - S - 12/2007  
Printed in Italy - F.lli Pozzoni - Cisano Bergamasco

**Alfa InfoMore**  
**00 800 2532 0000**

Dealer's stamp



www.alfaromeo.co.uk





[www.alfaromeo.com](http://www.alfaromeo.com)

