



Alfa Brera



Excitement

The Alfa Brera is quintessentially Italian sports coupé which has won plaudits from press and public alike.

This is a car for the connoisseur, combining excitement with maximum driving pleasure, style with sophisticated technology, and uncompromising performance with the comfort of a luxury saloon.



Design

The Brera's unique styling combines Giorgio Giugiaro's creativity with the unmistakable tradition of Alfa Romeo. The front is tapered, with the long bonnet sweeping back from the famous Alfa Romeo badge to the windscreen as if to emphasise the power of the engine. The body's slim, aerodynamic styling and harmonious proportions create an impression of compactness that belies the car's generous dimensions: 441 centimetres long, 183 centimetres wide, with a 252-centimetre wheelbase.

The interior is spacious and comfortable, a feeling enhanced by the unusual fixed glass roof (optional), which adds to the drama of the car's lines. The luggage compartment is equally roomy at 300 litres, and can be expanded to 610 litres by folding down the rear seatbacks.





Sportiness

The Alfa Brera embodies the values of sporting performance – but not at the expense of passenger comfort. High quadrilateral and rear multi-link suspension provide extremely dynamic handling, while making no compromises on safety or stability. Road holding is optimised by the Electronic Q2 system on all models, which combines the best of front and four-wheel drive layouts for maximum driving pleasure and control. The result is precise sports-style handling, and a feeling of total mastery – of car and road alike.





Power

The Alfa Brera comes with a choice of two powerful, responsive and technologically advanced petrol engines. The 260-horsepower 3.2 JTS is the most powerful in the range, using the exclusive Twin Phaser system to vary the phase angle of the valves. Combined with rear-wheel drive, it powers the car to a top speed of 250 km/h. There is also a four-wheel drive Q4 version, with a 6-speed Q-Tronic gearbox – a high-tech, high-performance solution that allows drivers to switch between manual and automatic transmission.

The equally sophisticated four-cylinder, twin camshaft, 16-valve 185-horsepower 2.2 JTS engine incorporates a phase changer offering high torque at low engine speeds.

But that's not all. The range also includes the 2.4 JTDM diesel engine, with a particulate filter as standard. Available in 210 or 200-horsepower versions with Q-Tronic automatic transmission, this combines power with total reliability – and maximum driving pleasure.

ENGINES	CYLINDERS OUTPUT		TORQUE	TRANSMISSION
3.2 JTS V6 Q4	60° V6	191 kW (260 hp)	322 Nm (32.8 kgm)	6-speed manual 6-speed Q-Tronic
3.2 JTS V6	60° V6	191 kW (260 hp)	322 Nm (32.8 kgm)	6-speed manual
2.2 JTS	4 in line	136 kW (185 hp)	230 Nm (23.4 kgm)	6-speed manual
2.4 JTDM	5 in line	154 kW (210 hp)	400 Nm (40.8 kgm)	6-speed manual
2.4 JTDM	5 in line	154 kW (200 hp)	400 Nm (40.8 kgm)	6-speed Q-Tronic



Control

Alfa Romeo has always been synonymous with driving pleasure, roadholding and maximum safety, particularly during emergency manoeuvres. The Alfa Brera takes these attributes to new heights, with an uncompromising design that features advanced high quadrilateral front suspension – an innovation derived from motor racing – and multi-link rear suspension.

The steering is the most direct in its class, with just two and a quarter turns from lock to lock, for instant responses. The braking system has aluminium monobloc callipers, and discs on all four wheels (all ventilated on the 3.2 JTS), ABS and electronic brake force distribution. For maximum safety, the Brera also comes with advanced electronic driver aids such as the VDC electronic stability programme.

Electronic Q2

All Alfa Brera models are fitted as standard with the advanced Electronic Q2 electronic differential. This

enables VDC to use the car's braking system to imitate the effect of a limited-slip differential, constantly balancing the distribution of engine torque between the two front wheels to suit the driving conditions and the road surface. In particular, when accelerating through corners, it applies braking to the front inside wheel, so more of the engine torque goes to the outside wheel, which has more grip. The 3.2 JTS version has Q4 permanent four-wheel drive. At the heart of this system is Twin Diff mechanical central differential (a development of the Torsen C system), which distributes the engine torque between the front and rear wheels depending on the road conditions. In normal driving, the Q4 slightly favours the rear axle, with 57 percent of available torque – giving handling characteristics which will delight committed sports-car drivers.



Entertainment and information

The Alfa Brera has revolutionised in-car communication and entertainment with Blue&Me™ and Blue&Me™NAV. Blue&Me™ is a hands-free system based on Windows Mobile® technology with speech recognition. It allows you to operate your Bluetooth® phone via voice commands or the quick selection keys on the steering wheel, with a text display in the multifunctional display.

Blue&Me™ allows you to play your favourite music stored on a USB stick or media player. Simply insert this into the USB port in the glove compartment, select the track using the buttons on the steering wheel and the frontal display, and enjoy top-quality sound from the car's stereo.

Blue&Me™ NAV offers a range of innovative functions and services using just three buttons. Simply press NAV to activate the state-of-the-art

navigation system, speak your destination, and then follow the voice prompts and graphical instructions in the multifunctional display.



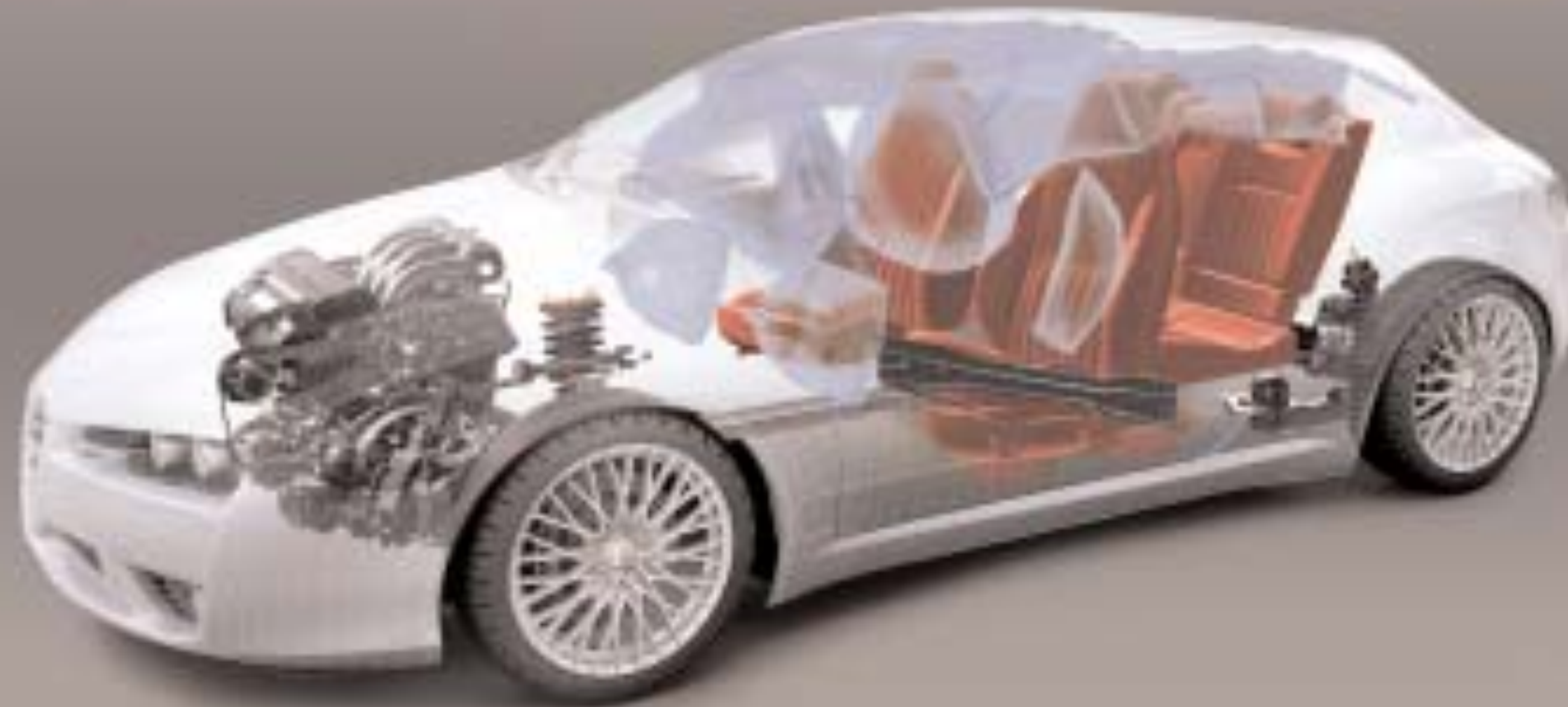
Comfort

The Alfa Brera wraps driver and passengers alike in a warm, welcoming embrace. This starts with the ergonomic new sports-style seats, strikingly styled and available in a choice of three materials: a new sports cloth on the 2.2 JTS versions, Frau® Leather, or the even more luxurious Poltrona Frau® Pieno Fiore Leather. But that's not all. The whole of the interior is designed to make your journey even more enjoyable, and enhance the vehicle's sporty appearance: black throughout, it features trims that are varnished or finished in high-tech materials such as aluminium and carbon fibre, and air conditioning and navigation systems operated by simple graphical interfaces. The Brera's functionality and elegance extend to every last detail – like the rear logo, which doubles as a boot release.

Safety

The Alfa Brera incorporates all the most advanced electronic active safety systems, to keep you safe whatever happens. There's four-channel ABS with EBD and Brake Assist, VDC to ensure vehicle stability, ASR to limit wheelspin on loose surfaces, MSR to prevent wheel lock when rapidly down-shifting in slippery conditions, and Hill Holder for easier hill starts. To protect passengers, the body is designed for maximum impact absorption.

There are also seven airbags as standard: a pair of two-stage bags in the front, side and window bags which also protect the rear seats, and new knee airbags for the driver.



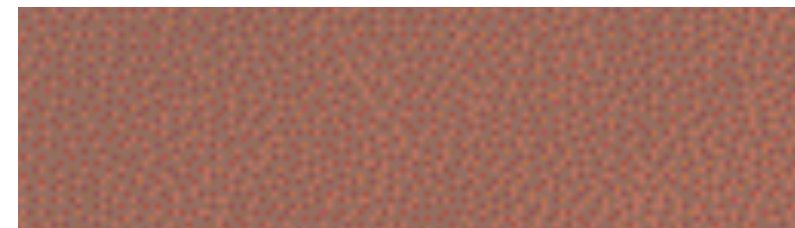




Frau® Leather



451
Black



491
Red



495
Natural

Sports Cloth



173
Black

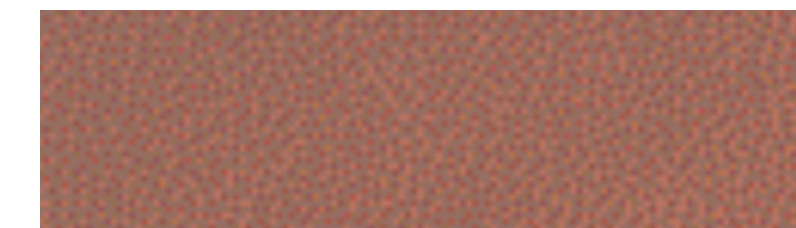
Poltrona Frau® Pieno Fiore Leather



902
910
Black



931
Natural



941
Red

Body Colours



Metallic
opt 210



Solid Paint

Special
Paint
opt 5B2

Alfa Brera Colour combination

Standard on Brera 2.2		Option on Brera and Standard on Brera 2.4 and 3.2 Range			Optional (All Range)		
Trim	Sports Cloth	Frau* Leather upholstery			Poltrona Frau* Leather upholstery		
Seat Colour	Black	Black	Red	Natural	Black	Red	Natural
Fascia colour	Black	Black	Black	Black	Black	Black	Black
Carpet colour	Black	Black	Black	Black	Black	Black	Black
Code	173	451	491	495	910	941	931
Solid							
601 Black	•	•	•	•	•	•	•
296 Ghiaccio White	•	•	•	•	•	•	•
Special Paint (option 5B2)							
289 Alfa Red	•	•	–	•	•	–	•
METALLIC (option 210)							
203 Montecarlo Blue	•	•	–	•	•	–	•
565 Alfa Silver	•	•	•	•	•	•	•
585 Touring Grey	•	•	•	•	•	•	•
586 Misano Blue	•	•	•	•	•	•	•
588 Gold	•	•	•	•	•	•	•
876 Carbonio Black	•	•	•	•	•	•	•

• = recommended – = not available

All information, descriptions and illustrations are given solely as a guide. Actual product specifications may differ due to manufacturing requirements. Alfa Romeo reserves the right to make any changes to its products it considers necessary. Some of the equipment described and/or photographed in this brochure are options.

Alfa Romeo - Marketing
Printed in UK - 03/07

www.alfaromeo.co.uk or call 00800 2532 0000



www.alfaromeo.co.uk



www.alfaromeo.com