

GTV



In English, Alfa Romeo's famous slogan '*Cuore Sportivo*' translates roughly as 'The Sporting Heart'. Whilst this goes some way to communicating the marque's commitment to motor racing and its love of performance cars, in Italian these two words mean much more. They encapsulate a mentality, a philosophy and a whole way of life that revolves around competitive excellence in the field of automotive engineering.

A COMPANY BORN TO RACE

Alfa Romeo can truly be described as a company that was born to race. Its very first vehicle in 1910 was capable of a staggering 62 mph and the next year it was taking part in the notoriously demanding Targa Florio road race.

In the 1920s, the company chief, Nicola Romeo, brought together engineering genius, Vittorio Jano, and team manager maestro, Enzo Ferrari, to create an unbeatable racing team that swept all before it.

After many Grand Prix wins plus carrying off the first ever World Championship in 1925, Alfa Romeo decided to demonstrate its versatility in a new and punishing race called the Mille Miglia – a perfect demonstration for its cars' performance, reliability and durability at the hands of drivers such as Ascari, Campari and the legendary Tazio Nuvolari.

With eleven firsts and eleven seconds, its Mille Miglia record stands forever unbeaten, along with its famous whitewash win of 1933, when the first ten cars across the line all bore the famous four-leaf clover racing symbol.

CHAMPIONS FROM LE MANS TO DAYTONA

After the war, Alfa Romeo turned its attention to Grand Prix racing once more and in 1950 it won the first modern Formula 1 World Championship with Farina behind the wheel of a Tipo 158. Then the next year, Fangio was to achieve the double for Alfa Romeo in his Tipo 159.

The 1960s and 70s then saw a change of direction towards World GT and Sports Prototype Championships – mainly endurance races which included events such as the Le Mans 24 Hours, the Daytona 24 Hours and the Brands Hatch 1000 kms. In 1975, the 33 TT 12 with its 12-cylinder Boxer engine carried off the World Makes Championship, a feat which was repeated in 1977 when the turbo-charged 33 SC 12 won all eight rounds of the contest.

SUPERTOURING SUPREMOS

In the 1990s, Alfa Romeo concentrated on European touring car racing, the most popular race series outside Formula One. As usual, the teams met with great success, taking the Italian Championship in 1992, the German Championship in 1993, the British Touring Car Championship in 1994 and the Spanish Touring Car Championship in 1994 and 1995.

When added to its 86 Grand Prix wins, 11 Mille Miglias, 9 Targa Florios, 5 Le Mans 24 Hours, 2 Formula One World Championships and 3 World Sportscar Championships, these victories are an ongoing testament to Alfa Romeo's devotion to motorsport and to its firm belief in improvement through competition.

As a result of this involvement, the lessons learnt on the track have been meticulously applied to every relevant aspect of Alfa Romeo's roadgoing design and engineering programmes. The fruits of this now manifest themselves in the stunning Alfa GTV. Here is a model that exudes the charisma, dynamism and excitement that truly encapsulates the unique Alfa Romeo spirit: *Cuore Sportivo*.



C^{te} GASTONE BRILLI PERI SU ALFA ROMEO TIRELLI
* Vincitore Gran Premio d'Italia e Campionato del Mondo 1925



ALFA GTV. THE PRIDE OF ALFA ROMEO

At every moment of Alfa Romeo history, there has always been a particular car entrusted with the task of representing the very best of Alfa's technology.

A symbol, a total, absolute expression of Alfa Romeo philosophy as a manufacturer.

A pure, uncompromising car.

To continue this tradition, Alfa Romeo presents the Alfa GTV, a superb interpretation of the sports coupé, a car designed and built to give unique, inimitable driving pleasure.

Its name resounds with reverence and conveys a challenge.

The reverence is for a unique engineering tradition, the Alfa Romeo tradition.

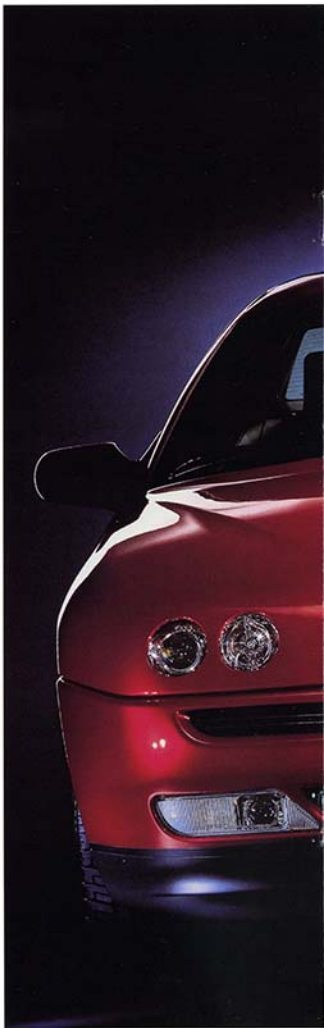
The challenge will be played out in terms of automotive engineering.

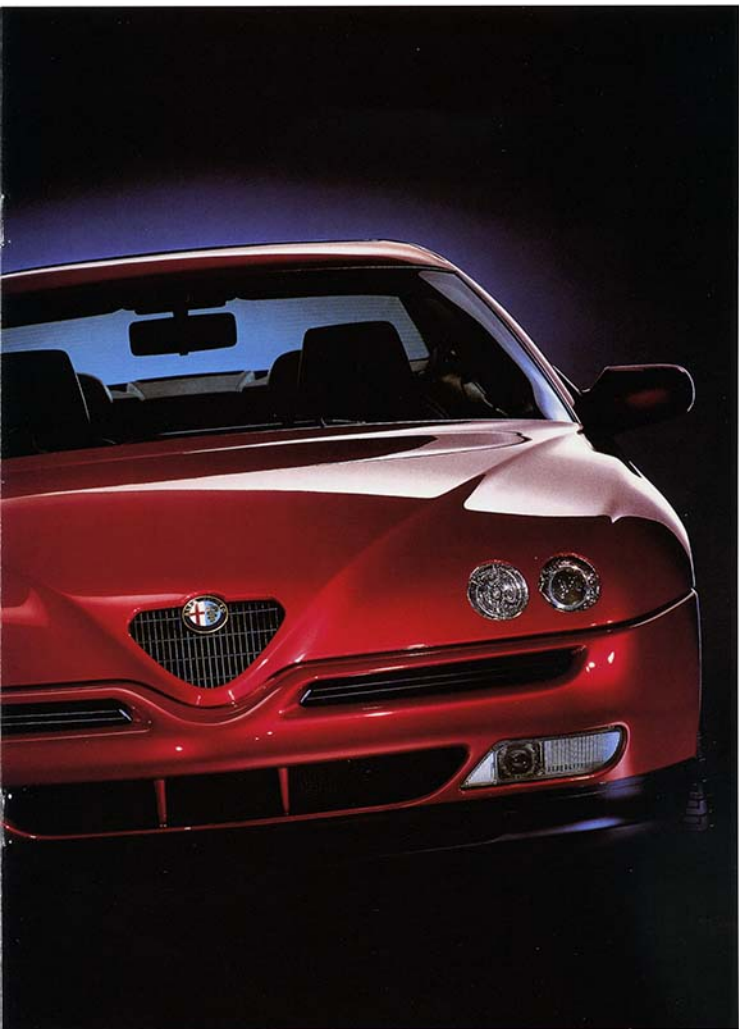
At its heart lies the perfect synthesis of state-of-the-art technologies, each an integral part of a refined mechanical project.

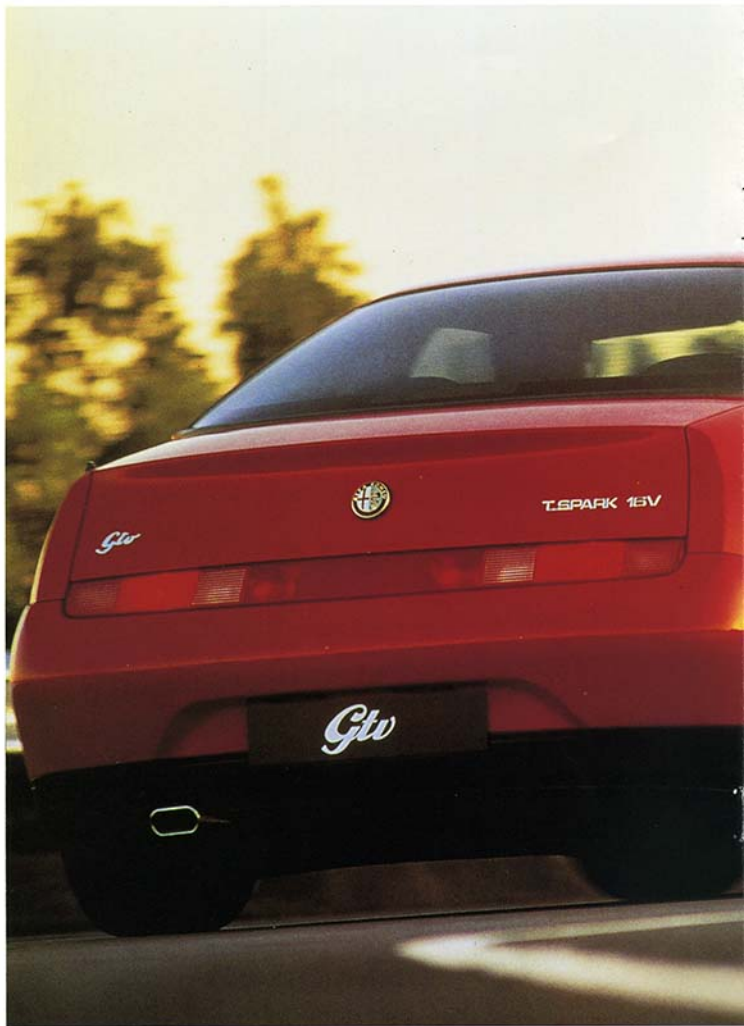
2-litre, Twin Spark 16-valve and 2.0 V6 Turbo engines and a 3.0 litre V6, 24 valve unit. Different engines designed for different uses, but all with the same extraordinary Alfa performance. Multi-link rear suspension layout. Advanced braking system with four-channel, four-sensor ABS by Bosch on all versions. An interior designed to let you sit back comfortably and enjoy the exciting performance. A strong character, confident and sure-footed. Reinforced body with crumple zone. Lateral impact beams. Airbag. Pre-tensioned front seat-belts. FPS (fire prevention system).

Alfa Code electronic engine immobiliser.

Alfa GTV. The pride of Alfa Romeo.









ADVANCED SPORTINESS

2.0 T.SPARK 16V

Four cylinders in line. Four valves and two spark plugs per cylinder.

Electrohydraulic variable valve timing.

Twin overhead camshafts.

Double counterweighting and torsional damper on crankshaft.

Two counter-rotating balancer shafts.

Hydraulic tappets.

3.0 V6 24V

Two overhead camshafts for each cylinder head. Four valves per cylinder.

Hydraulic tappets. Oil jet lubrication on the piston crowns. Platinum spark plugs.

Solid state top-coil ignition with dual knock control.

At the wheel of the Alfa GTV you experience the emotion of driving a real sports car, the result of direct, constant dialogue with the car and the road. The exchange of sensations and information, prompt responses, absorbing driving. An exciting dialogue.

4 CYLINDERS. 16 VALVES.

TWIN SPARK IGNITION

The 2.0 T.SPARK 16V engine features four cylinders in line with combined electronic management of injection and ignition, two spark plugs per cylinder, and coils housed

in the aluminium alloy multi-valve cylinder head. Variable valve timing for the best combination of power, torque, fuel economy and low emissions: at low speeds the intake timing is advanced to improve torque, while at high speeds it is delayed, boosting performance.

On the road these features translate into an extremely flexible engine which delivers 90% of torque at 2,500 rpm, for superb performance; effortlessly exploiting the 150 bhp-EC delivered by the engine, the car has a top speed of 215 km/h.

The steel crankshaft, with eight counterweights and torsional oscillation damper, guarantees perfect balance and smooth regular operation at all speeds for superb driving comfort.

6 CYLINDERS. V-SHAPED LAYOUT.

TURBOCHARGER

The 2.0 V6 turbo engine is a V-shaped 60° 6-cylinder turbocharged unit. An intercooler, or heat exchanger, cools the compressed air sent to the cylinders, while an overboost device momentarily increases the turbocharging pressure and drive torque when extra acceleration is needed. The combined electronic system that governs the ignition and sequential phased injection also provides digital control of the boost pressure to avoid the risk of knocking. Performance is at the peak of its class, maximum power of 220 bhp-EC at 6,000 rpm with 0-100 km/h acceleration in 7.4 seconds and a top speed of over 235 km/h.

THREE LITRES, 6 CYLINDERS.

V-SHAPED STRUCTURE, 24 VALVES

The 3.0 V6 24V engine was designed for pure performance. Fluid and smooth at all speeds, it is powerful and assertive, leading its class thanks to its design and construction. 6 cylinders in a 60° V with

The 3.0 V6 24V engine of the Alfa GTV. A sophisticated six cylinder unit with 60° V-shaped structure



cylinder head and case made entirely of light alloy. Timing gear with twin camshafts for each cylinder head and four valves for each cylinder, controlled directly by hydraulic tappets. Intercoolers on the cooling and lubrication systems. 225 bhp-EC at 6,300 rpm and a top speed of 240 km/h.

BRAKING SYSTEM WITH ABS

The braking system is of the split-line diagonally linked type, with four disc brakes (ventilated at the front), brake servo, and effort proportioning valve between the two axles. This system, combined with the negative ground offset of the front suspension keeps the car under control even if one of the two lines of the system should malfunction.

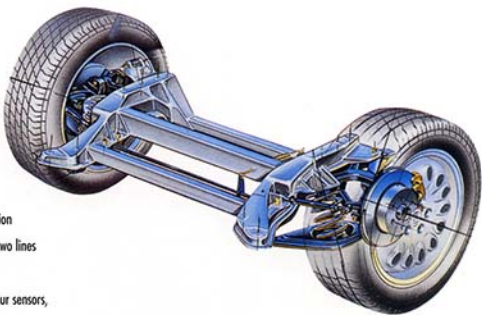
The Bosch ABS system with four channels and four sensors, which is standard on all versions, ensures safe, effective braking at all times.

MULTI-LINK REAR SUSPENSION

The superb driveability, handling and dynamic safety of the Alfa GTV are very much the result of the sophisticated multi-link rear suspension system with aluminium subframe. This system keeps the wheels perpendicular when cornering (thrust on the outside edge, deflation on the other side) so that the tyres are always correctly anchored to the ground, with a better grip margin. The lateral suspension elasticity allows the transverse load to converge the thrusting wheel so that the car will respond more promptly and smoothly.

The suspension makes a significant contribution to overall comfort in the car by limiting pitching during braking.

The multi-link rear suspension that equips all the Alfa GTVs. It guarantees superb driveability, enhanced steering precision and excellent dynamic safety. The fast bends and rapid changes in trajectory typical of fast driving, are made easier by the system's kinematics



A STRONG CHARACTER

- Styling by Pininfarina and the Alfa Romeo Style Centre.
- Wraparound bumpers extending to the wings.
- Wing design continuing the line of the bonnet.
- Long wheelbase and wide track.
- Polyelliptical headlights.
- Third brake light.

The theme of the sports coupé is one of the most fascinating.

It has always been the realm of Italian stylists and Alfa Romeo cars. Because the coupé is a vocation for Alfa Romeo, as much of a tradition as racing itself. The inspired line of the Alfa GTV was designed jointly with Pininfarina. Research and design activities have created an unmistakable, highly innovative design, developed with total respect for the identity of a legendary marque.

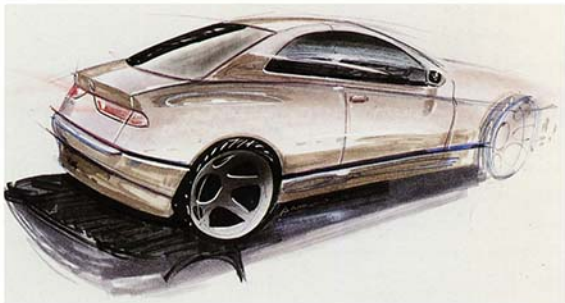
A UNIQUE PERSONALITY

The car has a marked wedge shape, with deep grooves along the sides. The front and rear overhangs are minimal, and the tracks are wide. The wheels are flush with the body under broad wheel arches. The accentuated curve of the front bonnet is underlined by two ribs that blend smoothly into the grille. The tail is high.

The styling of the Alfa GTV includes a combination of signs and styles, and formal details interpreted with perfect balance, in which the styling experience of great Alfa Romeos of the past is immediately evident, like a sophisticated game of similarities and differences.

The profile, with its characteristic "drop" shape, is projected strongly forward and brought up sharp by the cut of the tail, to underline the car's physical force. No functional detail is allowed to disturb the perfect styling balance. The door handles are hidden by a "fold" in the grooves. The roof design stresses the visual sensation of a perfectly controlled, restrained force, which is always ready to be set free.

The sloping, penetrating front and the large bonnet





The theme of the sports coupé is certainly one of the most fascinating. The goal is to design a car in which technological features are at the highest possible level.

And the shape must communicate the contents in the most attractive, exciting way possible

incorporating the distinctive round light clusters are presented as a single mass. The wraparound spoiler-shaped front bumper incorporates the foglights and air intakes, which emphasise the car's aggressive impact.

TECHNOLOGY AT THE SERVICE OF DESIGN

Certain constructional features confirm that the Alfa GTV is the fruit of state-of-the-art technological innovation. The front is built with a technologically advanced material, KMC, made primarily of polyester resin and fibreglass, which offers greater resistance to impact than traditional metal sheet, and a greater capacity for absorbing kinetic energy. It is not subject to corrosion and can be easily replaced if necessary.



From its early days Alfa Romeo has often invited the best coachwork designers to "clothe" its sports cars. Faithful to this tradition, the Alfa GTV was born from cooperation between the Alfa Romeo Style Centre and Pininfarina



COMFORT AND PERFORMANCE

- Alfa GTV. A sporty coupé which respects driver and passenger comfort.
- Classic 2+2 outfit.
- Typically sporty interiors.
- Natural leather finish.
- Comprehensive on-board equipment.

Sportiness or comfort? The Alfa GTV shows that it is possible to design a fast car without lowering the quality of life on board. A sports car to drive and enjoy.

COMFORT

The driving position was designed to the latest, most advanced ergonomic principles, conceived to enable the driver to feel the car's reactions and dialogue with it in absolute safety.

The passenger compartment is welcoming, furnished with sporty elegance, and accommodates up to four adults.

The driving seat adjusts for rake and reach together

with the steering-wheel, which is also height and reach-adjustable, to create an ideal driving position.

The steering-wheel and gear lever gaiter are covered in leather.

ELEGANCE AND SPORTINESS

The extensive instrumentation is grouped under a protective anti-glare lip.

The large, circular speedometer and rev counter, positioned at the centre of the steering-wheel, are an elegant styling reference to the great Alfa Romeos of the past, like the secondary indicators on the central console.

The service telltales, which keep the car's vital functions constantly under control, are of the "disappearing" type, only visible when they are lit.

The trip and mileage counter is positioned in a liquid crystal display between the speedometer and the rev counter, at the bottom of the instrument panel.

The interior of the Alfa GTV upholstered by Momo. This outfit is available on request in the colours Jerez red, Alfa leather or Pock white



CLIMATE CONTROL

The user-friendly, intuitive climate control system offers generous air flow and provides all-round distribution of the treated air inside the cabin through thirteen vents: five at the base of the windscreen, four at the two ends of the fascia to demist the side windows, two on the central console, two at the sides of the fascia and two at floor level.

The manual climate control unit is standard on the 2.0 TSpark 16V L, 2.0 V6 TB and 3.0 V6 24V, and available as an option on the basic 2.0 TSpark 16V.

STANDARD EQUIPMENT

The central tunnel houses the controls for the electric door mirrors and headlight beam adjustment, and an illuminated ashtray and lighter.

The welcoming anatomical seats are fitted with head-restraints and the foam padding provides differentiated support, as well as excellent lateral containment.

The interior is upholstered in elegant striped cloth personalised with the Alfa Romeo logo, or in natural leather.

The lavish standard appointments include a driver's airbag, power steering, electric windows with automatic function on the driver's side, central locking, heated electric door mirrors, radio wiring complete with 6 speakers and automatic electric aerial, a third brake light, headlight beam adjustment, foglights and the Alfa Code electronic engine immobiliser.

OPTIONS

On request standard equipment can be enhanced with options such as a sunroof, electronic anti-theft device, passenger's airbag, radio and metallic paint. There is

a choice of two types of leather upholstery on the Alfa GTV, either carbon grey Alfa Romeo leather seats, or the alternative of the appeal and prestige of exclusive Momo leather upholstery.

A complete outfit, made up of seats with excellent containment, shaped steering-wheel, and anatomical gear lever and hand brake grip with over-stitched gaiters.

The door panels are lined with the same leather and the carpet is coordinated with the leather.

Fine grain leather and an artisan finish are the guarantee of a quality choice with an unmistakable style.



The classic round instrumentation and short gear lever topped by a leather gaiter are a clear reference to the great Alfa Romeos of the past. The Alfa GTV is proud of its tradition

ABSOLUTE SAFETY

- Reinforced body.
- Side impact beams.
- Non-deforming cabin with rigid structure.
- Airbags.
- Seats with anti-submarining ridges.
- Anatomical head-restraints.
- Seat-belts with electronic pre-tensioners
- FPS fire prevention system with inertia switch and fuel flow-stop valve.
- Alfa Code electronic engine immobiliser.

The Alfa GTV project is one of the most sophisticated examples of Alfa Romeo technology.

Every component was designed to enhance its dynamic performance: powerful, flexible engines, front-wheel drive, independent suspension all round and multi-link at the rear, power steering, split-line diagonally-linked braking system with Bosch four-channel, four-sensor ABS.

OUTSTANDING TORSIONAL RIGIDITY

The outstanding torsional rigidity of the bodyshell is responsible for the car's extraordinary driveability, perfect roadholding and exceptional handling in all road conditions, contributing to the perfect acoustic comfort of the passenger compartment.

GLOBAL SAFETY

All the latest safety features are standard on the Alfa GTV. Programmed deformation, stiffened bodyshell, built to protect the rigid cabin, conceived as a non-deformable survival cell, and developed in severe, selective crash tests.

Side impact beams in the doors provide excellent protection from head-on or rear impact because they stiffen the whole door frame, limiting longitudinal and transverse deformation.

Energy absorbing steering-wheel with telescoping steering column.

Airbags. Seats with internal anti-submarining ridges to prevent occupants slipping forwards under the seat-belt in a collision.

Anatomical head-restraints.

Seat-belts with electronic pre-tensioners and height-adjustable attachments.

Fire retardant interior upholstery that meets U.S. standards.

FPS (fire prevention system), with inertia switch and fuel flow-stop valve to prevent fuel leaks.

Anti-misfiring shields under the body. Sheet metal fuel tank in a safe position.

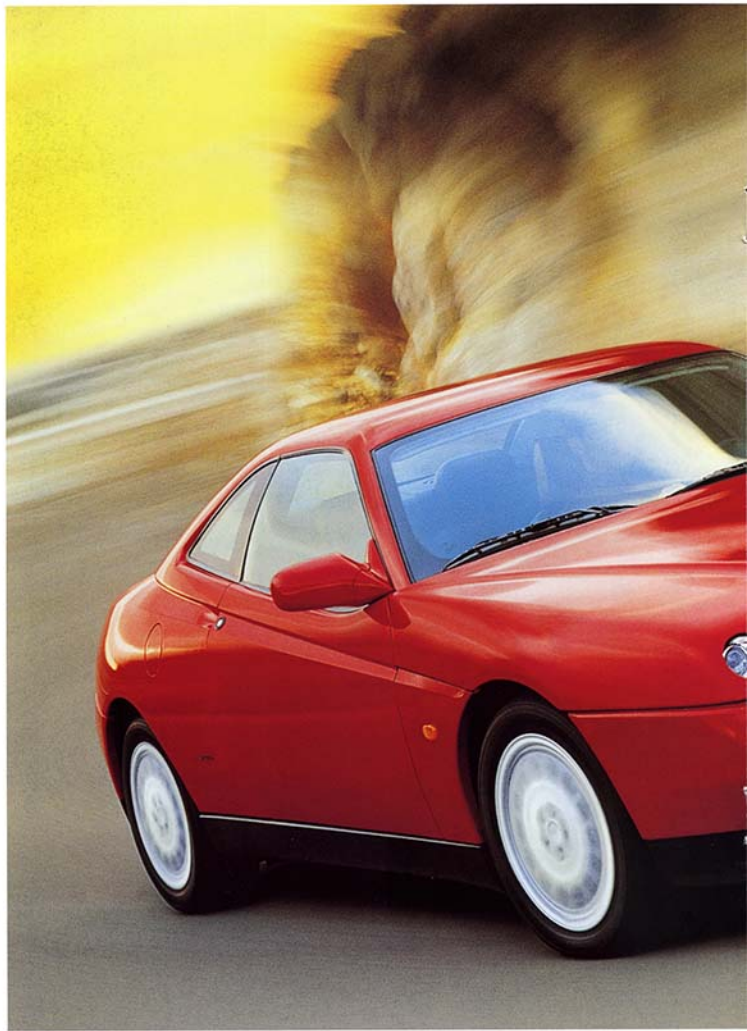
ALFA CODE

The Alfa GTV is safe even when it is parked, because the Alfa Code electronic key engine immobiliser is standard.

A computerised electronic system, controlled by the ignition key acts directly on the engine management computer with a connection code that is practically unbreakable.

Without the correct signal, there is no way the engine will start.







A low-angle, front-quarter view of a red Alfa Romeo GTV. The car's distinctive features, including the round headlights, the trapezoidal grille with the Alfa Romeo emblem, and the front bumper, are clearly visible. The background is a blurred, light-colored surface, suggesting motion.

GTV

**2.0
T. SPARK
16V**

2.0 T. SPARK 16V

A two-litre engine has always been the classic power pack of Alfa Romeo sports cars, a size that achieves a perfect balance between outstanding performance, superb handling and total dependability.

In full respect for this tradition, the engine chosen for the entry version of the Alfa GTV family is the new 1,970 cc unit with 4 cylinders, 16 valves and twin spark ignition: the evolution and synthesis of Alfa Romeo experience in the field of Twin Spark technology. This engine's automotive engineering is unrivalled where project refinement and constructional quality are concerned. Fitting two spark plugs and four valves per cylinder in the cylinder head is a masterpiece of engineering: the combustion chambers of the cylinders are particularly close together to ensure outstanding volumetric and thermodynamic efficiency for superb performance.

Sparkling and flexible, no maintenance before 100,000 km, environment-friendly and sparing on fuel, all guaranteed by the new injection system.

The eight counterweights, torsional vibration damper on the crankshaft and two counter-rotating balancer shafts guarantee perfect control of vibrations and a high level of acoustic comfort.

The result is smoothness and lack of noise comparable to a 6-cylinder unit. A unique, unmistakable personality.

Maximum active and passive safety.

Superb performance. The Alfa GTV 2.0 T.Spark 16V is a real pleasure to drive.

The car is available in two specification levels: standard and L.

The standard specification features lavish, comprehensive equipment, perfectly in line with the car's intended use.

The L specification also offers air conditioning, leather upholstery and light alloy wheels with wide tyres.

Quality options and accessories allow you to personalise the car, adopting it to your own requirements.

T. SPARK 16V

STANDARD EQUIPMENT

Power steering, electric windows, central locking, heated electric door mirrors, height and reach-adjustable steering-wheel, check control, complete radio wiring with 6 speakers and automatic electric aerial, seat-belts with electronic pre-tensioners, third brake light, leather covered steering-wheel and gear lever gaiter, headlight beam adjustment, foglights, driver's airbag, Alfa Code electronic key engine immobiliser, ABS, 15" steel wheels, 195/60 tyres.

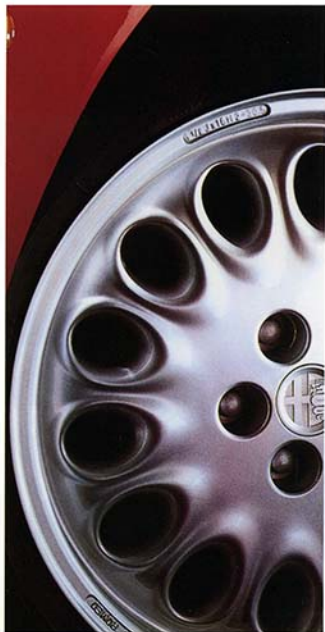
T. SPARK 16V L

STANDARD EQUIPMENT

The same equipment, plus: 16" alloy wheels, 205/50 tyres, climate control system, natural leather seats.

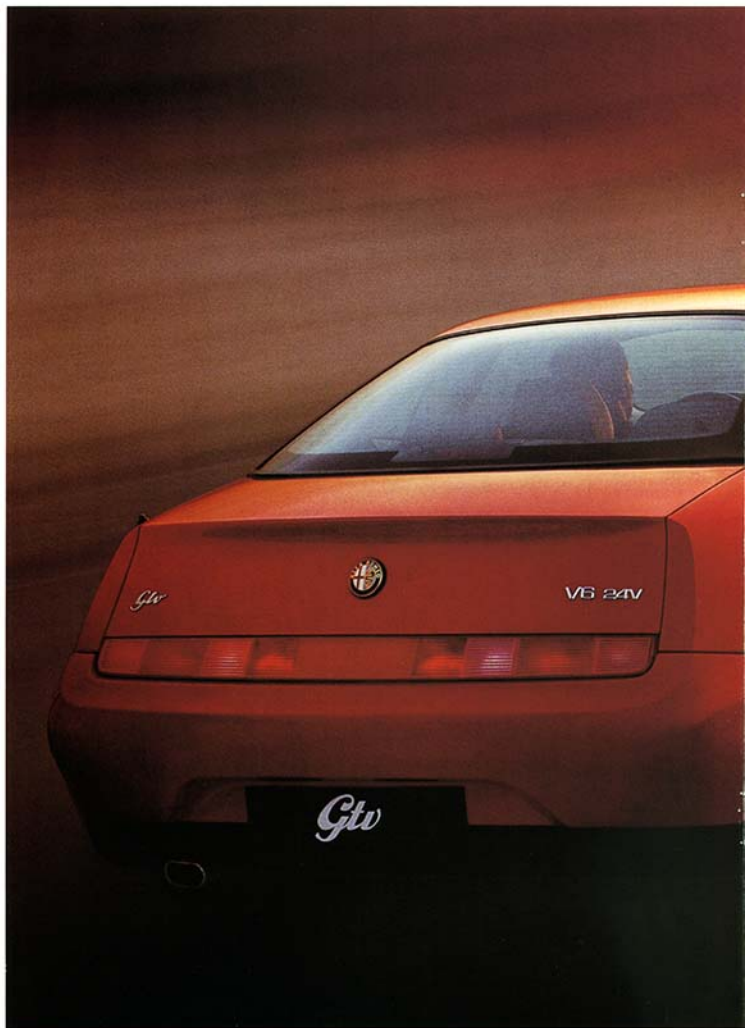
2.0 T. SPARK 16V

Capacity (cc)	1,970
Max. power output bhp-EC (kW-EC) at rpm	150 (110) 6,200
Top speed (km/h)	215
0-100 km/h acceleration (secs)	8.4











GTV

**3.0 V6
24V**

3.0 V6 24V

The range-topping Alfa GTV 3.0 V6 24V embodies the best technological skills and all the passion that Alfa Romeo has always put into the design of its sports cars.

The six cylinder 2,959 cc engine, with multivalve timing and 60° V layout is an undisputed benchmark for the best automotive engineering.

The cylinder head and case are entirely in aluminium alloy.

There are two camshafts for each head and the four-valve-per-cylinder timing has direct drive.

The lubrication system, with oil jets on the piston crowns, and the cooling system both include an air/oil heat exchanger.

Ignition is of the top-coil solid state type, with a single coil per cylinder and twin knock control.

The combined electronic engine management is entrusted to a latest generation Bosch Motronic M3.7.1 control unit. Both rows of cylinders fit stainless steel manifolds.

Platinum spark plugs and automatic timing belt tensioners and accessories guarantee 100,000 km of maintenance-free driving.

An engine with such outstanding features ensures that the Alfa GTV stands out for its superb performance: 220 bhp-EC and over 240 km/h.

Plus outstanding flexibility for an exceptionally fluid drive.

The 3 litre Alfa GTV comes with comprehensive standard equipment.

The alloy wheels are of new design with large ventilation holes which reveal the red brake calipers (with the Alfa Romeo logo on the front).

The leather steering-wheel has 3 spokes and a perfect grip, so important for fast driving.

STANDARD EQUIPMENT

Power steering, electric windows, central locking, heated electric door mirrors, height and reach-adjustable steering-wheel, check control, complete radio wiring with 6 speakers and automatic electric aerial, seat-belts with electronic pre-tensioners, third brake light, leather covered steering-wheel and gear lever gaiter, headlight



beam adjustment, foglights, driver's airbag, Alfa Code electronic key engine immobiliser, antiskid device, ABS, 16" alloy wheels, 205/50 tyres, leather upholstery and climate control.

3.0 V6 24V

Capacity (cc)	2,959
Max. power output bhp-EC (kW-EC) at rpm	220 (162) 6,300
Top speed (km/h)	over 240
0-100 km/h acceleration (secs)	6.7



THE ALFA ROMEO ACCESSORIES RANGE

Alfa Romeo knows its customers very well. It knows what they require from a car, how they use it and the part it plays within their schedule of business and pleasure activities. Individuality is the prime characteristic of Alfa GTV drivers - a distinctive quality that sets them apart from ordinary motorists.

So to maximise the potential of the Alfa GTV, a unique range of specially dedicated accessories has been developed, to match the interests and pursuits of this elite group. In conjunction with specialist manufacturers, Alfa Romeo has produced these useful additions, each one fulfilling the function of enhancing the car's practicality and style.

For long journeys and Alpine holidays, a boot-mounted rack can transport extra luggage or skis. And to make

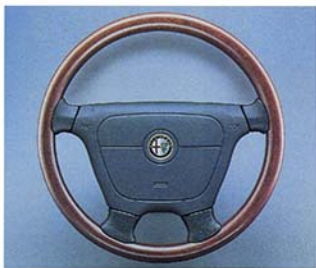
the most of every cubic inch of the GTV's boot, a set of exquisitely crafted, leather trimmed travel bags is a sensible investment.

Also available is a specially tailored car cover and stone chip guards for the rear wheelarches.

Fashion aficionados can kit themselves out with clothing from the Alfa Romeo collection - everything from tee shirts to rally jackets.

These are just a small selection of the Alfa Romeo accessories available. Your local dealer will be pleased to advise you of further items in the range.





ALFA ROMEO. AT THE CUSTOMER'S SERVICE

AlfaCare Warranty

All new Alfa Romeo cars are covered by a 3 years/100,000 km (whichever comes first) AlfaCare warranty, covering parts, materials and labour.

AlfaCare 24-hour Assistance

In addition to the basic warranty (and applicable for 3 years) all new Alfa Romeo cars come complete with a 24-hour Assistance package, accessible to our customers via a special 1-800 telephone line and available 365 days a year Australia-wide.

The AlfaCare 24-hour Assistance package will provide help to Alfa owners in the event of mechanical breakdown, as well as in cases such as a car running out of fuel, a flat battery, tyre puncture, keys locked in the car and so on.

AlfaCare Bodywork Warranty

All body panels on new Alfa Romeo cars are covered by a 6 year warranty against corrosion-perforation from the date of first registration (subject to compliance with conditions).

AlfaCare Warranty Transferability

All components of the AlfaCare warranty package (3 years/100,000 km warranty, 24-hour Assistance and the 6 year corrosion warranty) are transferable to subsequent owners during the period of their operation.

Please consult your authorised Alfa Romeo dealer for further information about the AlfaCare warranty package.

TECHNICAL SPECIFICATION

2.0 16V I SPARK

3.0 V6 24V

SPECIFICATION

No. of cylinders, arrangement	4 in line	6 in 60° V
Bore x stroke (mm)	83 x 91	93 x 72.6
Capacity (cc)	1970	2959
Compression ratio	10:1	10:1
Max. power output bhp-EC (kW-EC)	150 (110) at rpm	220 (162) 6300
Peak torque kgm-EC (Nm-EC)	19 (186) at rpm	27.5 (270) 5000
Timing (drive)	DOHC, with electrohydraulic variable valve timing on the intake side camshaft, driven by the control unit	DOHC for each bank
Fuel feed	Bosch Motronic M 2.10.3 Multipoint electronic injection	Bosch Motronic M 3.2.1 Multipoint electronic injection

ELECTRICAL EQUIPMENT (12 V)

Battery capacity (Ah)	70	70
Generator (A)	100	120

TRANSMISSION

Drive	front	front
Gearbox:		
1st	3.545:1	3.8:1
2nd	2.238:1	2.235:1
3rd	1.52:1	1.52:1
4th	1.156:1	1.156:1
5th	0.946:1	0.914:1
Reverse	3.909:1	3.545:1
Final drive	3.562:1 (16/57)	3.353:1 (17/57)

TYRES

	205/50 R 16 87 W	205/50 R 16 87 Y
--	------------------	------------------

STEERING

System	rack and pinion with power steering	rack and pinion with power steering
Turning circle between kerbs (m)	11.2	11.4

SUSPENSION

Front	independent MacPherson type, with lower wishbones and anti-roll bar	
Rear	independent, quadrilateral with upper triangle, twin lower links, false steer, coil springs, hydraulic dampers and anti-roll bar	

BRAKING SYSTEM

	Discs front and rear, with floating calipers, vacuum servo. Pedal control with twin-line diagonally linked hydraulic circuit; pressure regulating valve on wheels and anti-lock braking (ABS standard)	Discs with fixed calipers at front and floating calipers at rear with vacuum servo. Pedal control with twin-line diagonally linked hydraulic circuit; pressure regulating valve on wheels and anti-lock braking (ABS standard)
Front disc, mm	284 (ventilated)	305 (ventilated)
Rear disc, mm	240	240

BODYWORK - DIMENSIONS

No. of seats	4	4
No. of doors	2	2
Length / width (mm)	4285 / 1780	4285 / 1780
Height (mm)	1318	1318
Wheelbase (mm)	2540	2540
Front / rear track (mm)	1499 / 1487	1508 / 1530
Luggage compartment (dm ³)	110	110

SUPPLIES - WEIGHTS

Fuel tank (litres)	70	70
Kerb weight D1N (kg)	1370	1415
Towable weight (kg)	1000	1000

PERFORMANCE - CONSUMPTION

Top speed (km/h)	215	over 240
Acceleration 0-100 km/h (secs)	8.4	6.7
Consumption (l/100 km): at 90 km/h	6.2	7.9
at 120 km/h	7.8	9.8
urban cycle	10.4	14.6

STANDARD EQUIPMENT AND OPTIONS

Australian specification:	2.0 16V T. SPARK	3.0 V6 24V
Alfa Code anti-theft immobiliser	●	●
Driver and front passenger airbags	●	●
Anti-lock braking system (ABS)	●	●
Pre-tensioning front seatbelts	●	●
Fuel cut-out inertia switch	●	●
5-speed manual transmission	●	●
Power steering	●	●
Electric windows	●	●
Heated, electrically-operated mirrors	●	●
Central locking	●	●
Air-conditioning	●	●
Stereo radio with CD player	●	●
"Carbon Grey" leather upholstery	●	●
Leather-trimmed steering wheel	●	●
Leather-trimmed shift knob/boot, handbrake boot	●	●
Height and reach-adjustable steering wheel	●	●
Fog lights	●	●
Headlight beam adjustment	●	●
16-inch alloy wheels ("5-hole"-design for 3.0 V6 24V)	●	●
Remote fuel and boot release	●	●
Electric glass sunroof, tilt/slide with shade	○	○
Metallic paint	○	○
Momo "custom" interior package, comprising:	○	○
* Momo premium leather upholstery		
* Colour-keyed carpeting		
* Colour-keyed stitching for steering wheel, shift knob/boot, handbrake boot		
3 years/100,000 km AlfaCore warranty, with:	●	●
* 24-hour Assistance		
* 6 years corrosion-perforation warranty		

● = standard ○ = optional

BODY COLOURS



130 Alfa Red



601 Black



195 Proteo Red



309 Tropical Green



473 Atoll Blue



612 Light Grey



613 Titanium Grey



632 Metallic Black

INTERIOR TRIMS



166 Grey Cloth



546 Carbon Grey Leather
(Lusso pack only)



881 Jerez Red Momo Leather
(Lusso pack only)



885 Natural Alfa Momo Leather
(Lusso pack only)

This brochure was produced for the European market, and hence certain specifications and details contained herein are not applicable to products marketed in Australia.

Equipment specifications shown on the preceding page do, however, represent the status of vehicles for the Australian market known at the time of printing. Ateca Automotive Pty. Ltd., the Australian importer and distributor, reserves the right to alter all specifications and pricing at any time without notice.

Please consult with your nearest authorised Alfa Romeo dealer, or Ateca Automotive Pty. Ltd., for clarification of availability.

Dealer's stamp

