

LIETTA GIULIETTA GI  
GIULIETTA GIULIE  
LIETTA GIULIETTA  
LIETTA GIULIETTA GI  
GIULIETTA GIULIE  
LIETTA GIULIETTA  
LIETTA GIULIETTA GI  
GIULIETTA GIULIE  
LIETTA GIULIETTA  
LIETTA GIULIETTA GI



The 2019 Alfa Romeo Giulietta is ready to let you play a new song. The timeless elegance and power of the Giulietta perfectly represent the legacy of Alfa Romeo as it offers new and exciting options and continues to push boundaries. The immersive, distinctive Alfa Romeo driving experience is front and centre, and there's no stage fright when the curtain goes up, because it's when the spotlight is shining bright on her that the Giulietta is at her best.

OUR HANDS TELL THE WHOLE STORY

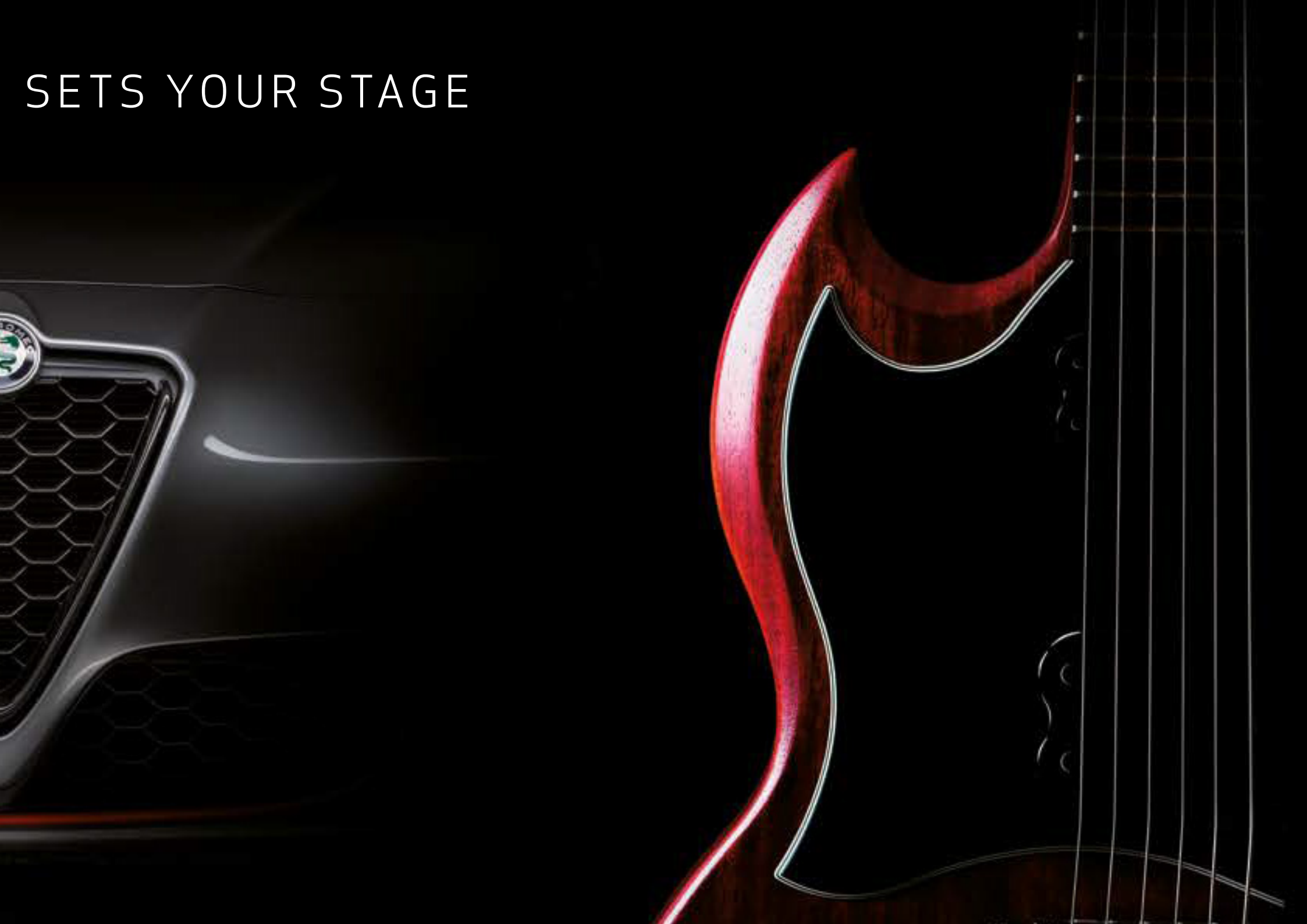




# THE ARRANGEMENT



SETS YOUR STAGE







TAKE AN EXECUTIVE DECISION

Every day is different, but that doesn't mean you can't have a car that always fits your mood. Whether it's the graceful night out to enjoy an orchestral performance or the wide-open road with the music up and the windows down, the 2019 Alfa Romeo Giulietta is there for you, more than ever before.





Choose from a wide range of models and packs to get the look you've always wanted. The unmatched beauty of its sharp lines and luscious curves is a testament to the handcrafted Italian style Alfa Romeo has always been known for, and how we became a synonym internationally for powerful elegance and excellence.

PREPARE TO BE VELOCE



MAKE THE MOULD BREAK THE MOULD



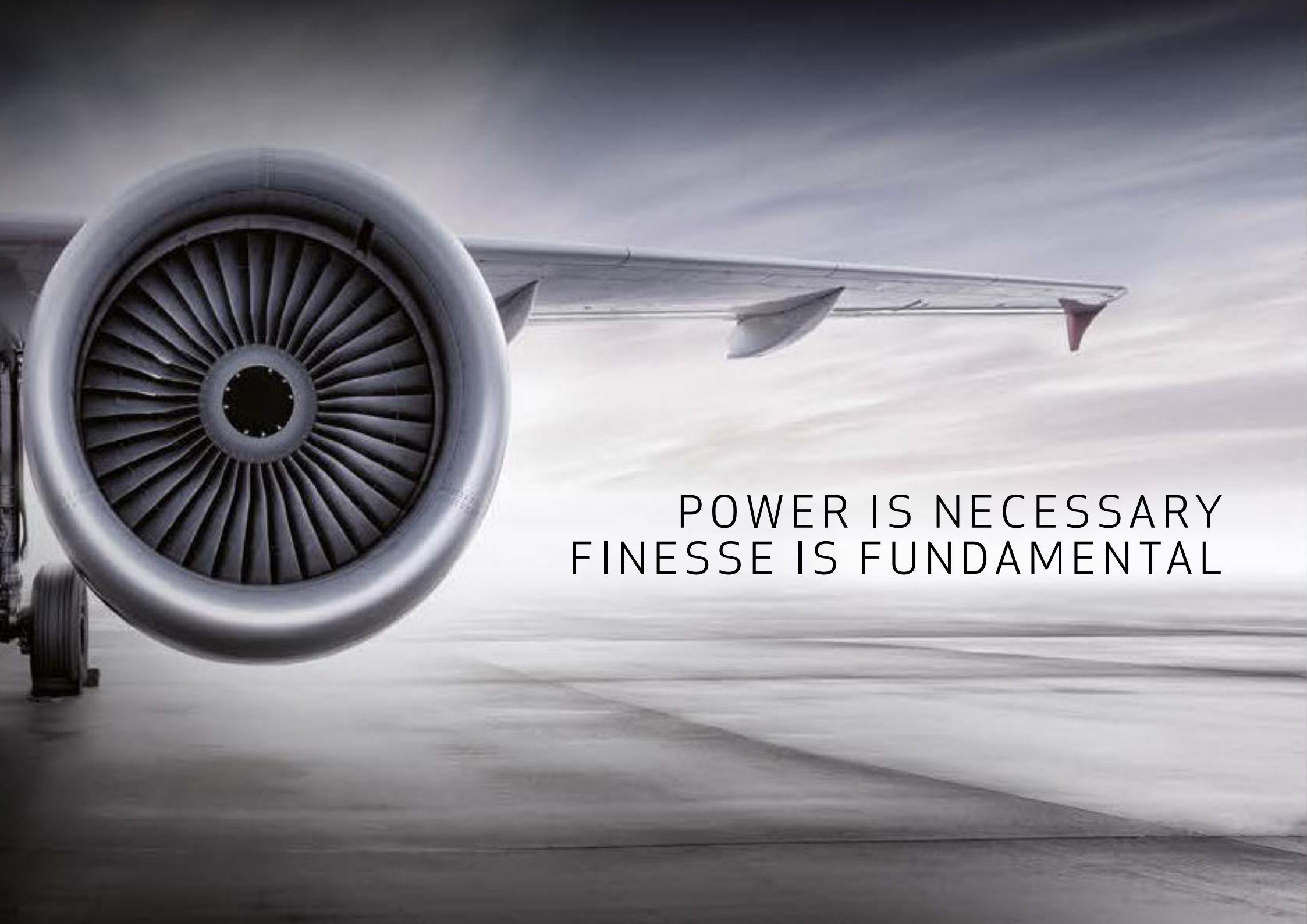




THE ARCHETYPE  
OF ELEGANCE







POWER IS NECESSARY  
FINESSE IS FUNDAMENTAL





GIULIETTA



Let your personal style become unique comfort in the 2019 Alfa Romeo Giulietta. The remarkable attention to detail will not only capture your attention but also make you feel at home behind the wheel. With a multitude of trim options delivering new interior combinations, from new cloth and leather seats to eye-catching yellow stitching and an upgraded dashboard, your interior will take on a life of its own.



TAKE IT ALL IN



A close-up, high-contrast photograph of a black leather surface, likely a piece of clothing or a bag. The leather has a fine, pebbled texture. Two parallel lines of bright yellow stitching run diagonally across the frame, from the top left towards the bottom right. The lighting is dramatic, highlighting the texture of the leather and the vibrant color of the thread against the dark background.

TRUE STYLE ALSO REVEALS  
INNER NATURE











DESIGN THAT STANDS ABOVE THE REST





# MORE THAN IMMERSIVE BECOME ONE

Giulietta comes equipped with both Uconnect™ touch screen multimedia system and Uconnect™ Live services, boasting functions like Bluetooth®, audio streaming, USB connector, voice commands, SMS reader, an optional navigation system and gives you the opportunity to monitor savings, consumption and emissions while still staying connected with your streaming music and friends with Facebook and Twitter.

View and use all your favorite apps on the screen, just like on your smartphone: thanks to the Alfa™ Connect 7" radio by Alpine, compatible with Apple CarPlay and Android Auto™, your smartphone always is connected in a safe and innovative way.

Experience sound exactly how it should be with a Bose™ Sound System, pushing out more than 500 watts to 9 speakers and a subwoofer, ensuring exceptional and immersive sound quality in any condition for everyone on board.



## MOPAR CONNECT

Mopar® Connect keeps the driver constantly connected with their vehicle thanks to an embedded SIM, GPS and accelerometer. Reap the benefits of the easy-to-use Uconnect™ LIVE mobile app, that gives the driver direct access to remote assistance and control services that guarantee increased safety on the road, complete peace of mind and easier vehicle care.

Through the Uconnect™ LIVE app, drivers with vehicles equipped with the Mopar® Connect will be able to:

- receive instant support in case of crash or breakdown;
- receive real-time alerts in case of unexpected movement of the car or when the car alarm is triggered;
- locate the car in a crowded car park;
- check the vehicle doors status;
- check the vehicle status directly from home before leaving for a trip;
- monitor the use of the vehicle;
- receive smart notifications as a reminder to check if the back seats are still occupied.





# POWER IN HARMONY

The sweet sound of true harmony. Giulietta delivers the power and the thrill that is Alfa Romeo while utilising modern technology to create maximum efficiency in multiple powertrain combinations. It's a compromise that feels like the best of both worlds. Choose from turbo-charged petrol and turbo diesel engines that respect the world around you, and your wallet, all while you compose your own masterpiece.

ENGINES	1.4 TB 120HP	1.6 JTDm-2 120HP	1.6 JTDm-2 120HP ALFA TCT	2.0 JTDm-2 170hp ALFA TCT
Fuel	Petrol	Diesel	Diesel	Diesel
Transmission	Manual	Manual	Alfa TCT (Semi Auto)	Alfa TCT (Semi Auto)
No. of cylinders, arrangement	4 in line	4 in line	4 in line	4 in line
Displacement (cc)	1368	1598	1598	1956
Max. power output hp (kW - EC) at rpm	120 (88) 5000	120 (88) 3750	120 (88) 3750	170 (125) 3750
Peak torque Nm (kgm - EC) at rpm	215 (22) @ 2500	320 (32.5) 1750	320 (32.5) 1750	350 (35.7) 1750
Kerb weight DIN (kg)	1280	1390	1400	1410
Top speed (mph)	121	121	121	133
Acceleration (driver + 30 kg) 0-62 (s)	9,4	10	10,2	8,3
WLTP Combined Low mpg (l/100km)	36.2 (7.8)	49.6 (5.7)	48.7 (5.8)	47.9 (5.9)
WLTP Combined High mpg (l/100km)	32.8 (8.6)	47.1 (6.0)	46.3 (6.1)	45.5 (6.2)
Exhaust emissions - CO <sub>2</sub> (g/km)	164	123	125	130
Emissions Standard	Euro 6d-TEMP	Euro 6d-TEMP	Euro 6d-TEMP	Euro 6d-TEMP
Start&Stop	Standard	Standard	Standard	Standard



CUT FROM THE SAME CLOTH





# SUPER



## ENGINES:

### **Petrol 1.4 TB 120 HP**

Manual Transmission

### **Diesel 1.6 JTDM 120 HP**

Manual and Automatic  
Transmission (TCT)



DUAL ZONE AUTOMATIC  
CLIMATE CONTROL



FOGLIGHTS



17" TURBINE DESIGN  
ALLOY WHEELS



# CONTENTS

- 17" Turbine design alloy wheels with 225/45 R17 tyres
- 6 Airbags – driver, passenger, front side & window
- 60/40 split folding rear seats
- Alfa code immobiliser and alarm system
- Alfa D.N.A. (Vehicle's driving mode selector)
- Cruise control
- Dual zone automatic climate control
- Electrically heated and adjustable wing mirrors
- Electronic key with remote central locking and boot release
- Electronic Q2 differential
- Front airbag deactivation on passenger's side
- Front and rear electric windows
- Front armrest with storage compartment
- Front fog lights
- Front splitter & rear DAM with silver trim
- Height adjustable driver seat
- Leather steering wheel with phone and radio controls
- Matrix display with white illumination
- Multifunctional display and trip computer

- Rear air vents
- Rear parking sensors
- Rear spoiler
- Safe Lock
- Satin chrome door handles
- Satin effect wing mirrors
- Silver headlight finishing
- Space saver steel wheel (for 17" and 18" wheels)
- Start&Stop technology
- TPMS (Tyre Pressure Monitoring System)
- Uconnect™ 5" colour touchscreen infotainment system with:
  - 6 speakers
  - Bluetooth® hands-free system
  - CD player, USB, Aux-in or Bluetooth® audio streaming
  - DAB Radio
  - LIVE services for internet access
  - Smartphone connectivity
  - Voice commands and SMS reader (text to speech)
- VDC (ABS + ASR + EBD + Brake Assistant) with Hill Holder



**049** - Black & Grey cloth seats with cannelloni grey stitching (standard)

**402** - Black Sports Leather (optional)

**478** - Mocha Sports Leather (optional)

**401** - Red Sports Leather (optional)



# SPECIALE



## ENGINES:

**Petrol 1.4 TB 120 HP**

Manual Transmission

**Diesel 1.6 JTDM 120 HP**

Manual Transmission



DUAL ZONE AUTOMATIC  
CLIMATE CONTROL



DARK GLOSSY DETAILS



17" 5 HOLE DESIGN ALLOY  
WHEELS WITH DARK FINISH



# CONTENTS

## AS GIULIETTA SUPER, PLUS:

- 17" 5 hole design alloy wheels with dark finish with 225/45 R17 tyres
- Aluminum kickplates
- Aluminum sports pedals
- Carbon effect dashboard surround & door panels
- Dark Exterior sports finishing ('V' grille surround, door handles, wing mirrors, 'Giulietta' badge, wheel caps)
- Darkened headlights
- Darkened interior headliner
- DarkFlair dashboard bezel
- Enlarged sports exhaust finished in gloss black
- Fabric and Alcantara® sports seats with red stitching (standard)
- Front splitter and Rear diffuser with red sports trim
- Privacy glass
- Red stitching on steering wheel, handbrake & gearstick gator
- Side skirts
- Sports suspension
- Dark finish front fog lights bezel



**308** - Fabric and Alcantara® sports seats with red stitching (standard)

**402** - Black Sports Leather sports seats with red stitching (optional)

**401** - Red Sports Leather (optional)



# VELOCE



## ENGINES:

**2.0 JTDM 170 HP**

Automatic Transmission (TCT)



FRONT AND REAR PARKING SENSORS



6.5" UCONNECT™ NAV

**VELOCE**

VELOCE BADGE



18" 5-HOLE DESIGN ALLOY  
WHEELS WITH DARK FINISH



# CONTENTS

## AS GIULIETTA SPECIALE, PLUS:

- 18" Dark 5-hole design alloy wheels with 225/40 R18 tyres
- 6.5" Uconnect™ Nav
- Automatic headlights
- Automatic windscreen wipers
- Chrome 'Giulietta' & 'Veloce' badging
- Distinctive yellow front splitter & rear diffuser
- Electrochromic rear view mirror
- Electric folding wing mirrors
- Enlarged Brembo yellow brake calipers
- Fabric and Alcantara® sports seats with yellow stitching (standard)
- Front & Rear parking sensors
- Height adjustable passenger Seat
- Rear armrest & ski hatch
- Electric lumbar adjust
- Sports leather steering wheel with yellow stitching
- Steering wheel paddles
- Yellow stitching on handbrake & gearstick gator
- Heated washer jets



**632** - Fabric and Alcantara® sports seats with yellow stitching (standard)

**308** - Fabric and Alcantara® sports seats with red stitching (standard with Rosso Pack)

**323** - Leather and Alcantara® sports seats with red stitching and integrated headrest (optional with Rosso Pack)

**402** - Black Sports Leather (optional)

**401** - Red Sports Leather (optional)











DECONSTRUCT TO RECONSTRUCT

# WHEELS



**420 17" Turbine design alloy wheels with 225/45 R17 tyres**



**5YN 17" 5 hole design alloy wheels with 225/45 R17 tyres**



**6Y8 17" 5 hole design alloy wheels with dark finish with 225/45 R17 tyres**



**74B 17" Multi-spoke alloy wheels with 225/45 R17 tyres**

Standard ● Optional ○ Not available –

WHEELS	SUPER
420 17" Turbine design alloy wheels with 225/45 R17 tyres	●
5YN 17" 5 hole design alloy wheels with 225/45 R17 tyres	○
6Y8 17" 5 hole design alloy wheels with dark finish with 225/45 R17 tyres	–
74B 17" Multi-spoke alloy wheels with 225/45 R17 tyres	○
68Q 18" Turbine design alloy wheels with 225/40 R18 tyres	○
68P 18" 5 hole design alloy wheel with 225/40 R18 tyres	○
6H6 18" Dual 5 spoke alloy wheels with titanium finish with 225/40 R18 tyres	–
6JB 18" 5 Hole design alloy wheels with dark finish with 225/40 R18 tyres	–
9S5 18" 5 Hole design alloy wheels with matt black finish & Alfa logo with 225/40 R18 tyres	–
OR4 18" Dual V-Spoke alloy wheels with dark finish with 225/40 R18 tyres	○
OR5 18" Dual V-Spoke alloy wheels diamond cut with 225/40 R18 tyres	○





**68Q 18" Turbine design alloy wheels with 225/40 R18 tyres**



**68P 18" 5 hole design alloy wheels with 225/40 R18 tyres**



**6H6 18" Dual 5 spoke alloy wheels with titanium finish with 225/40 R18 tyres**

SPECIALE	VELOCE
—	—
○	—
●	—
—	—
—	—
○	○
○	○
○	●
○	○
○	○
○	○



**6JB 18" 5 Hole design alloy wheels with dark finish with 225/40 R18 tyres**



**9S5 18" 5 Hole design alloy wheels with matt black finish & Alfa logo with 225/40 R18 tyres**



**OR4 18" Dual V-Spoke alloy wheels with dark finish with 225/40 R18 tyres**



**OR5 18" Dual V-Spoke alloy wheels diamond cut with 225/40 R18 tyres**





COLOUR THAT CANNOT BE CONTAINED



# COLOURS

---



**414 Alfa Red**



**601 Alfa Black**



**217 Alfa White**



**409 Lipari Grey**



**805 Etna Black**



**318 Stromboli Grey**



**620 Silverstone Grey**



**486 Cobalto Blue**



**756 Misano Blue**



**800 Visconti Green**



**529 Matte Magnesium Grey**



**361 Competizione Red**



TRIM LEVELS		SUPER			SPECIALE			VELOCE		VELOCE - ROSSO PACK OPTION (1B4)			
Seat upholstery	Evoluzione Cloth	Sports Leather			Fabric & Alcantara®	Sports Leather		Fabric & Alcantara®	Sports Leather	Fabric & Alcantara®	Leather and Alcantara® sports seats with integrated headrest	Sports Leather	
Seat colour	Black/Grey	Black	Red	Mocha	Black with red stitching	Black	Red	Black with yellow stitching	Black	Black with red stitching		Black	Red
Seat Description	Black/Grey fabric seats with cannelloni grey stitching	Black Sports Leather	Red Sports Leather	Mocha Sports Leather	Fabric & Alcantara® sports seats with red stitching	Black Sports Leather	Red Sports Leather	Fabric & Alcantara® sports seats with yellow stitching	Black Sports Leather	Fabric & Alcantara® sports seats with red stitching	Leather & Alcantara® sports seats	Black Sports Leather	Red Sports Leather
Door panels/dashboard surround	Black/Black	Black/Black	Red/Red	Mocha/Mocha	Carbon Effect	Black/Black	Red/Red	Carbon Effect	Black/Black	Carbon Effect		Black/Black	Red/Red
Dashboard insert	Embossed Miron				Darkflair Fire			Darkflair Fire		Darkflair Fire			
Steering Wheel	Leather with black stitching				Sports flat bottomed leather steering wheel with red stitching			Sports flat bottomed leather steering wheel with yellow stitching		Sports flat bottomed leather steering wheel with red stitching			
Interior code	049	402	401	478	308	402	401	632	402	308	323	402	401
Interior Option code	—	212			52J	212		1HH	212	52J	788	18L	
SOLID PAINT													
414 Alfa Red (opt. 5CG)	▲	●	●	●	▲	●	●	▲	●	●	●	●	●
601 Alfa Black (opt.5CF)	○	○	○	○	○	○	○	○	○	○	○	○	○
217 Alfa White (opt. 5CH)	○	○	○	○	○	○	○	○	○	○	○	○	○
METALLIC PAINT													
409 Lipari Grey (opt. 5CE)	○	○	○	—	○	○	○	—	—	—	—	—	—
805 Etna Black (opt. 58B)	○	○	○	○	○	○	○	○	○	○	○	○	○
318 Stromboli Grey (opt. 5CC)	○	○	○	○	○	○	○	○	○	○	○	○	○
620 Silverstone Grey (opt. 210)	○	○	○	○	○	○	○	○	○	○	○	○	○
486 Cobalto Blue (opt. 5DN)	○	○	○	○	○	○	○	○	○	○	○	○	○
756 Misano Blue (opt. 5DS)	○	○	○	—	○	○	○	○	○	○	○	○	○
800 Visconti Green (opt. 5DR)	○	○	○	○	—	—	—	—	—	—	—	—	—
EXCLUSIVE PAINT													
529 Matte Magnesio Grey (opt. 4H5)	—	—	—	—	○	○	○	○	○	○	○	○	○
361 Competizione Red (opt. 5JQ)	○	○	○	○	○	○	○	○	○	○	○	○	○

▲ Default Exterior&Interior colour combination  
● Default body colour (No Cost)  
○ Optional body colour



PURSUE NEW PERSPECTIVES





# PACKS



# CARBON STYLE

(opt.1B2 - Available on Speciale & Veloce)

- Carbon effect front grille surround
- Carbon effect side skirts
- Carbon effect wing mirrors







## VELOCE ROSSO

(opt. 1B4 - Available on Veloce)

- Red stitching/detailing on Fabric & Alcantara® seats
- Red stitching on steering wheel, gear knob, and handbrake
- Front and rear bumpers red moulding
- Brake calipers red treatment



# PACKS

# CONVENIENCE

(opt.1B5 - Available on Super & Speciale)

- Automatic headlights
- Automatic windscreen wipers
- Electric folding wing mirrors
- Electric lumbar adjustment on front seats
- Electrochromic rear view mirror
- Front & Rear parking sensors
- Height adjustable passenger seat
- Rear armrest with storage compartment



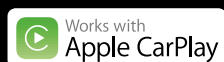
# TECH

(opt. 08Z - Available on all versions)

- Alfa™ Connect7" radio by Alpine, works with Apple CarPlay and Android Auto™
- HDMI port
- Rear-view camera

## APPLE CARPLAY

The smart way to use your iPhone when you are at the wheel. With Apple CarPlay, you can see your most useful apps on the central display of Giulietta: you can receive driving instructions, make calls, send and read messages and play music, all while remaining focused on the road.



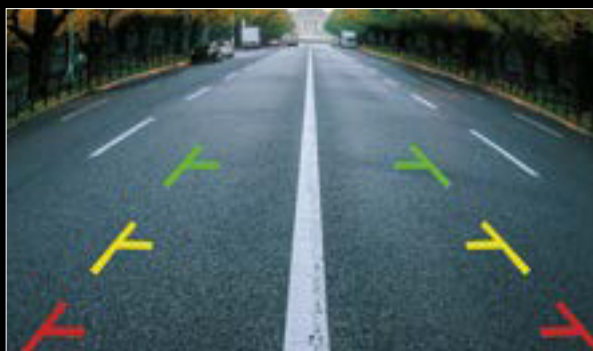
Apple CarPlay is a trademark of Apple Inc.  
The image refers to Apple CarPlay

## ANDROID AUTO™

Designed for safe driving while staying connected. With its simple and user-friendly interface, integrated controls on the steering wheel and voice actions, Android Auto™ minimises distractions while you are in your car.

**androidauto**

Android Auto™ is a trademark of Google LLC.



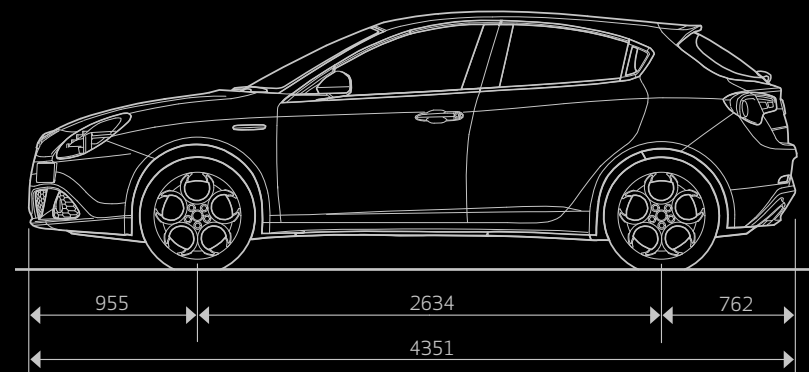
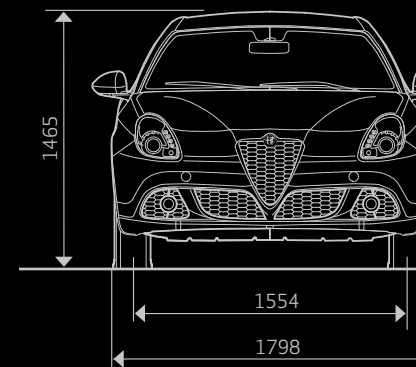


# TECHNICAL SPECIFICATIONS

SPECIFICATIONS	1.4 TB 120 HP	1.6 JTDm-2 120hp
No. of cylinders, arrangement	4 in line	4 in line
Bore x stroke (mm)	72x84	79.5x80.5
Displacement (cm³)	1368	1598
Compression ratio	9.8:1	16.5:1
Max. power output bhp (kW - EC) at rpm	120 (88) @ 5000	120 (88) @ 3750
Peak torque Nm (kgm - EC) at rpm	215 (22) @ 2500	320 (32.5) @ 1750
Timing system (drive)	Toothed belt with hydraulic tappets	Toothed belt with hydraulic tappets
Fuel system	MPFI supercharged with exhaust gas turbocharger and intercooler	Multijet 2: direct injection 1,600 bar, variable geometry turbocharger and intercooler
Start & Stop system	Standard	Standard
TRANSMISSION		
Drive	Front	Front
Gearbox	6-speed manual	6-speed manual
STEERING		
Steering box	Dual Pinion	Dual Pinion
Kerb-to-kerb turning circle (m)	10.9	10.9
SUSPENSION		
Front	Advanced McPherson with aluminium pillar, hollow anti-roll bar fitted on connecting rod	Advanced McPherson with aluminium pillar, hollow anti-roll bar fitted on connecting rod
Rear	Multilink with auxiliary frame and aluminium wishbones and anti-roll bar	Multilink with auxiliary frame and aluminium wishbones and anti-roll bar
DISC BRAKES		
Front (mm)	281	281
Rear (mm)	264	264
CAPACITIES - WEIGHTS		
Fuel tank capacity (litres)	60	60
Kerb weight (kg)	1280	1390
Kerb weight including driver (kg)	1355	1465
Max. towable weight (kg) [not broken]	500	500
Max. towable weight (kg) [broken]	1300	1300
PERFORMANCE		
Top speed (mph)	121	121
Acceleration (1 occupant + 30 kg) 0-100 km/h (s)	9.4	10.0
FUEL CONSUMPTION - EMISSIONS*		
WLTP Combined cycle MPG (l/100km) Low	36.2 (7.8)	49.6 (5.7)
WLTP Combined cycle MPG (l/100km) High	32.8 (8.6)	47.1 (6.0)
Exhaust emissions CO <sub>2</sub> (g/km)	164	123
Emission standard	Euro 6d-TEMP	Euro 6d-TEMP

\* Fuel consumption figures determined on the basis of the new WLTP test procedure as per Regulation (EU) 2017/1347. CO<sub>2</sub> figures, based on the outgoing test cycle (NEDC), will be used to calculate vehicle tax on first registration. Only compare fuel consumption and CO<sub>2</sub> figures with other cars tested to the same technical procedures. These figures may not reflect real life driving results, which will depend upon a number of factors including the accessories fitted (post-registration), variations in weather, driving styles and vehicle load. For further information, please visit [www.alfaromeo.co.uk/alfa-romeo-world/la-meccanica-delle-emozioni/certification-wltp](http://www.alfaromeo.co.uk/alfa-romeo-world/la-meccanica-delle-emozioni/certification-wltp) or contact your local retailer.

1.6 JTDM-2 120hp ALFA TCT	2.0 JTDM-2 170hp ALFA TCT
4 in line	4 in line
79.5x80.5	83x90.4
1598	1956
16.5:1	16.5:1
120 (88) @ 3750	170 (125) @ 3750
320 (32.5) @ 1750	350 (35.7) @ 1750
Toothed belt with hydraulic tappets	Toothed belt with hydraulic tappets
Multijet 2: direct injection 1,600 bar, variable geometry turbocharger and intercooler	Multijet 2: direct injection 1,600 bar, variable geometry turbocharger and intercooler
Standard	Standard
Front	Front
Alfa TCT (Semi Auto 6 Speed)	Alfa TCT (Semi Auto 6 Speed)
Dual Pinion	Dual Pinion
10.9	10.9
Advanced McPherson with aluminium pillar, hollow anti-roll bar fitted on connecting rod	Advanced McPherson with aluminium pillar, hollow anti-roll bar fitted on connecting rod
Multilink with auxiliary frame and aluminium wishbones and anti-roll bar	Multilink with auxiliary frame and aluminium wishbones and anti-roll bar
281	305
264	264
60	60
1400	1410
1475	1485
500	500
600	600
121	133
10.2	8.3
48.7 (5.8)	47.9 (5.9)
46.3 (6.1)	45.5 (6.2)
125	130
Euro 6d-TEMP	Euro 6d-TEMP



# STANDARD AND OPTIONAL EQUIPMENT

EXTERIORS	SUPER	SPECIALE	VELOCE
Electrically heated and adjustable wing mirrors	●	●	●
Front fog lights	●	●	●
Front splitter & rear DAM with silver trim	●	—	—
Rear spoiler	●	●	●
Satin chrome door handles	●	—	—
Satin effect wing mirrors	●	—	—
Dark Exterior sports finishing ('V' grille surround, door handles, wing mirrors, wheel caps)	—	●	●
Dark finish front fog lights bezel	—	●	●
Dark finish 'Giulietta' badging	—	●	—
Darkened headlights	—	●	●
Enlarged sports exhaust finished in gloss black	—	●	●
Front splitter and Rear diffuser with red sports trim	—	●	<b>P</b>
Privacy glass	—	●	●
Side skirts	—	●	●
Chrome 'Giulietta' & 'Veloce' badging	—	—	●
Distinctive yellow front splitter & rear diffuser	—	—	●
Electric folding wing mirrors	<b>P</b>	<b>P</b>	●
Enlarged Brembo yellow brake calipers	—	—	●
Red Brembo brake calipers	—	○	<b>P</b>



INTERIORS	SUPER	SPECIALE	VELOCE
60/40 split folding rear seats	●	●	●
Dual zone automatic climate control	●	●	●
Front and rear electric windows	●	●	●
Front armrest with storage compartment	●	●	●
Height adjustable driver seat	●	●	●
Leather steering wheel with phone and radio controls	●	●	●
Matrix display with white illumination	●	●	●
Multifunctional display and trip computer	●	●	●
Rear air vents	●	●	●
Silver headlight finishing	●	–	–
Aluminum kickplates	–	●	●
Aluminum sports pedals	–	●	●
Carbon effect dashboard surround & door panels	–	●	●
Darkened interior headliner	○^	●	●
DarkFlair dashboard bezel	–	●	●
Fabric and Alcantara® sports seats with red stitching (standard)	–	●	<b>P</b>
Red stitching on steering wheel, handbrake & gearstick gator	–	●	<b>P</b>
Electrochromic rear view mirror	<b>P</b>	<b>P</b>	●
Fabric and Alcantara® sports seats with yellow stitching (standard)	–	–	●
Height adjustable passenger Seat	<b>P</b>	<b>P</b>	●
Rear armrest & ski hatch	<b>P</b>	<b>P</b>	●
Electric lumbar adjust	<b>P</b>	<b>P</b>	●
Sports leather steering wheel with yellow stitching	–	–	●
Steering wheel paddles	○*	–	●
Yellow stitching on handbrake & gearstick gator	–	–	●
Alfa Connected Services	○	○	○
Leather and Alcantara® sports seats with red stitching and integrated headrest (optional with Rosso Pack)	–	–	○
Sports Leather Seats (Black/Mocha/Red)	○	○	○
Electric double sunroof	○	○	○
Heated front seats	○	○	○
Hi-Fi Bose® sound system with digital amplifier (8 speakers + 1 central + subwoofer)	○	○	○

\* option only available with Alfa TCT

^ This option becomes mandatory when selecting electric double sunroof on Super versions

# STANDARD AND OPTIONAL EQUIPMENT

SAFETY & TECHNOLOGY	SUPER	SPECIALE	VELOCE
6 Airbags – driver, passenger, front side & window	●	●	●
Alfa code immobiliser and alarm system	●	●	●
Alfa D.N.A. (Vehicle's driving mode selector)	●	●	●
Cruise control	●	●	●
Electronic key with remote central locking and boot release	●	●	●
Electronic Q2 differential	●	●	●
Front airbag deactivation on passenger's side	●	●	●
Rear parking sensors	●	●	—
Safe Lock	●	●	●
Space saver steel wheel (for 17" and 18" wheels)	●	●	●
Start&Stop technology	●	●	●
TPMS (Tyre Pressure Monitoring System)	●	●	●
Uconnect™ 5" colour touchscreen infotainment system with: 6 speakers, Bluetooth® hands-free system, CD player, USB, Aux-in or Bluetooth® audio streaming, DAB Radio, LIVE services for internet access, Smartphone connectivity, Voice commands and SMS reader (text to speech)	●	●	—
VDC (ABS + ASR + EBD + Brake Assistant) with Hill Holder	●	●	●
Sports suspension	—	●	●
Uconnect™ 6.5" colour touchscreen Radio Nav with preloaded 3D Maps, TMC, Bluetooth® audio streaming, voice recogniton, DAB, USB & Aux-in)	—	—	●
Automatic headlights	P	P	●
Automatic windscreen wipers	P	P	●
Front & Rear parking sensors	P	P	●

PACKS	SUPER	SPECIALE	VELOCE
<b>Carbon Style Pack:</b> Carbon effect front grille 'V', Carbon effect side skirts, Carbon effect wing mirrors	–	○	○
<b>Convenience Pack:</b> Rear armrest with storage compartment, third rear head restraint and through-load system, Electric folding wing mirrors, Electric lumbar adjustment, Height adjustable passenger seat, Front and Rear parking sensors, Electrochromic rear view mirror, Automatic headlights, Automatic windscreen wipers	○	○	–
<b>Tech Pack:</b> Alpine 7" Radio with Apple Carplay & Android Auto, Rear View Camera	○	○	○
<b>Veloce Rosso Pack:</b> Sports steering wheel (with red stitching), Sports Front splitter & rear DAM with red trim, Red Brembo brake calipers	–	–	○





# AUTHENTIC ACCESSORIES AND SERVICES



## EXTERIORS

Rear dam	Aluminium engine oil cap
Side skirts	18" elegant burnished alloy rim kit
Carbon rear spoiler	18" turbine alloy rims with white treatment kit
Carbon wing mirror caps	Tyre valve caps kit with Alfa Romeo logo
Polished chrome wing mirror caps	Rear mud guards
Titanium grey wing mirror caps	Roof bars
Satin chrome wing mirror caps	Aluminium bicycle rack
Oversized twin exhaust tail pipe kit	Ski rack
Parking sensors	Roof box
Alarm	Removable tow hook
Aluminium fuel cap	



Carbon rear spoiler

## VEHICLE WARRANTY

The purchase price of your Alfa Romeo car includes a 24 months< warranty that starts from the handover date and has no mileage limits. The warranty covers the car against manufacturing defects, which will be resolved free of charge using genuine or reconditioned spare parts. Operations under warranty are carried out by an Alfa Romeo Dealership and include: • Repair or replacement of the faulty component • Manpower needed for the replacement or repair • Supply of consumable materials needed to carry out the repair under warranty. You have the benefit of roadside assistance for the duration of the warranty.

## ALFA ROMEO CUSTOMER CARE

You can call Alfa Romeo on a freephone number from anywhere in Europe. We are at your service to provide our Roadside Assistance services so that you can travel without worries.

## REMOTE CONNECTION, CLOSER PROTECTION.

Mopar® Connect is the Official feature set of connected services dedicated to Safety & Security and Vehicle Remote Control.

It offers you instant support in case of emergency and an easy vehicle management through digital tools. For further information, Mopar experts at Alfa Romeo Authorized Dealerships and Workshops will always be at your service.

## DOWNLOAD THE MOBILE APP UCONNECT™ LIVE AND STAY CONNECTED WITH YOUR CAR.



### MY:REMOTECONTROL



#### FIND CAR

Quickly locate the vehicle. The system provides a map with directions to its exact location.



#### AREA ALERT / SPEED ALERT

The system automatically sends a notification if the vehicle is trespassing into a pre-set area setting or exceeding a speed limit established by the customer.



#### REMINDER

Receive smart notifications at selected days when exiting the vehicle that will help you to avoid forgetting something inside the car.



### MY:ASSISTANT



#### MY:ASSISTANT

In the event of heavy impact, the system sends your position to operations center. A my:Assistant operator will contact you and will be able to request help on site.



#### ROADSIDE ASSISTANCE

In the event of a breakdown, you can talk to a my:Assistant operator who will locate you and send help at your position.



#### THEFT ASSISTANCE

It will alert you when unauthorized towing is detected and will enable you to receive support and assistance for recovery of the vehicle.

## INTERIORS

Carbon gear lever knob
Sports pedal kit plus aluminium kick plate
Illuminated aluminium kick plate kit (front only)
Boot organiser with accessories*
Rear blinds kit
Boot nets kit
Central tunnel nets kit
Rubber mats with 'Giulietta' name kit
Carpet mats with 'Giulietta' name with red, silver or yellow stitching
Semi-rigid boot liner

\*Not available together with Pack Carbon



Carbon gear lever knob (only for MT transmission)

The service is active 24 hours a day, 365 days a year for: • Towing and breakdown requests in the case of faults and accidents • Information on the service network • Free passenger return (or continuation of journey) service • Payment of hotel expenses • Repaired car pick-up • Cash advance • Dispatch of spare parts.

Information service: everything you want to know about our models (versions, options, promotions, prices), about our services and about the Alfa Romeo Dealership network. The service also allows you to book a road test in the car of your choice at one of our Dealerships. Customer Care: Alfa Romeo is at your service to you to satisfy every need or request connected with the use of your car or our aftersales services. The freephone number 00800 2532 0000 can be called free of charge from anywhere in Europe. It is easy to remember, all you have to do is dial the word "ALFA" on your telephone keypad.



**MOPAR**  
**CONNECT**



### MY:CAR

my:CAR  
Check the vehicles status. Fuel levels, battery levels, tyre pressures, and mileage, can all be viewed remotely.

## ALFA ROMEO CUSTOMER CARE

Call ALFA INFOMORE\* for information on products and services and to ask for roadside assistance (24 hours a day, 7 days a week).

**Alfa InfoMore**  
00 800 2532 0000

\*Remember to check the cost of the call if you call from abroad or from a mobile phone.

## WEB

### my Alfa Romeo

Take care of your Alfa Romeo in a single click.

## ALFA ROMEO INFOSOCIAL



Follow #AlfaCareUK for info from the world of Alfa Romeo or send a public tweet or private message to @AlfaRomeoCareUK for direct help.

## E-COMMERCE



Visit the Alfa Romeo online store:  
**store.alfaromeo.com**



**MOPAR  
CONNECT  
FLEET**

## MOPAR<sup>®</sup> CONNECT FLEET: THE RIGHT WAY TO MANAGE YOUR FLEET.

Mopar<sup>®</sup> Connect Fleet is the innovative solution for managing your fleet in the most effective and profitable way. It can process complex data and present it in a clear and understandable way: just a click and you get real-time control over activity, status, maintenance and assistance for each vehicle.



### DASHBOARD

A virtual operation center where you can instantly view every vehicle of your fleet, checking all the parameters of your interest.



### REPORT

Detailed data information and customisable reports are available for a comprehensive overview. Know everything about your fleet and take the best and most timely decisions.



### MAINTENANCE

Simplify maintenance management and reduce costs by scheduling maintenance based on activity hours or mileage. Hence, keep your fleet vehicles efficient and compliant with regulations.



### ADMINISTRATION

Easy access to essential forms, simplifying your fleets administrative management and identifying risk areas using the data in your possession.

## KEEP YOUR ALFA ROMEO IN TIP-TOP CONDITION WITH MOPAR<sup>®</sup> VEHICLE PROTECTION



**VEHICLE  
PROTECTION**

Mopar<sup>®</sup> Vehicle Protection knows that your vehicle needs different care at different points in its life, that is why we have designed a range of services tailored for you and your car by Mopar<sup>®</sup>, the Official Service Partner of Alfa Romeo. Our aim is to ensure that your driving experience will be always pleasant and reassuring, with your vehicle in a perfect shape just like the first day you bought it. Subscribe to one of the MVP plans directly when purchasing a Giulietta and include it (if desired) in the FCA Bank financial offer or within subscription terms of each product. MVP guarantees that all service operations are performed with genuine parts by highly qualified and specialized technicians in authorized Giulietta repair facilities, all over Europe. Select the service plan that suits your driving habits best.

### MAXIMUM CARE: 100% PEACE OF MIND, WHEREVER YOUR JOURNEY TAKES YOU

The service plan built to cover all mechanical and electrical components, beyond the factory warranty. Subscribe to a MAXIMUM CARE program within 24 months after vehicle registration and continue benefitting from the expert care that only Alfa Romeo can offer you and is completely flexible. This plan offers you complete peace of mind throughout the period you desire to extend your warranty for.

### EASY CARE: FIX THE PRICE OF YOUR REGULAR SERVICING

The plan with the right mix of expertise, value and convenience for you. This service plan is designed to be a simple way to budget your vehicle's servicing requirements and ensuring your vehicle never misses a vital service interval. Subscribe to the Easy Care plan before the first chargeable service and guarantee you get the maximum life out of your vehicle.

#### MAXIMUM CARE OFFERS YOU COMPLETE PEACE OF MIND FOR THE FULL DURATION OR MILEAGE OF THE PRODUCT

YEARS ADDED TO THE 2-YEAR FACTORY WARRANTY	+1 YEAR	+2 YEARS	+3 YEARS
OPTION 1	45.000 KM	60.000 KM	75.000 KM
OPTION 2	90.000 KM	120.000 KM	150.000 KM
OPTION 3	120.000 KM	160.000 KM	200.000 KM

#### DURATION & MILEAGE OPTIONS

VEHICLE AGE	2 YEARS	3 YEARS	4 YEARS	5 YEARS
OPTION 1	30.000 KM	45.000 KM	60.000 KM	75.000 KM
OPTION 2	60.000 KM	90.000 KM	120.000 KM	150.000 KM
OPTION 3	80.000 KM	120.000 KM	160.000 KM	200.000 KM

## FINANCE PACKAGES AND INSURANCE SERVICES

FCA Bank is the bank dedicated to motorists specialized in the car financing industry. Whether you are a private customer, professionals or run your own business, FCA BANK offers you the best and most flexible financial solutions to facilitate your forthcoming purchase of an Alfa Romeo so that you can drive it away. With FCA BANK you can combine your finance or leasing package with high value-added insurance services tailored to meet your requirements: fire and theft, collision and fully comprehensive insurance, extended warranty, and windscreen or vehicle security marking. Moreover, FCA Bank proposes long-term rental as ideal solution for companies, professionals and private individuals who want to benefit from a new vehicle without the burden of ownership and the duties that this involves. However you choose to experience mobility, FCA BANK can satisfy your needs with financial and leasing packages combined with exclusive services. Visit [www.fcabankgroup.com](http://www.fcabankgroup.com) for full details.

### INSTALMENT PLANS

This financing solution allows you to spread the payment of all or part of your new Alfa Romeo over a period ranging from 12 to 72 months, or part of the purchase cost of a used car for a period ranging from 12 to 60 months.

### LEASING

If you are a professional, a freelancer or run your own business, this solution offers you the option of using your car without tying up your capital. You have a choice of contract term (from 24 to 60 months) and advance, plus a flexible final redemption value.



### PERSONAL CONTRACT PURCHASE

To finance your Alfa Romeo you can choose to pay a variable advance from 0% to 50% integrated with the value of your used car in case of trade-in. At the end of the three year period, you can decide to keep your Alfa Romeo settling the rest in a single payment or in instalments or you can change your car with a new one picked from the Alfa Romeo line-up.

### RENTAL SERVICES

Long-term rental is the ideal solution for companies and professionals who want to benefit from and appreciate all the advantages of their new car without the burden of ownership and the duties that this involves. Long-term rental offers tangible advantages: • Being free from the encumbrances of managing a car • Simplifying administrative matters: one payment for all services • Tailoring rental services to the customer's needs • Flexible fleet management formula • Having an expert, qualified partner for managing fleet costs • Direct costs known from the start of the concerned period • No capital tied-up • Fee deductions according to business category and use of the car.

For information contact your Dealership or visit the [www.leasys.com](http://www.leasys.com) website

### SPECIAL SALES PROGRAMMES

Autonomy is a multi-faceted programme that covers specific outfits for cars and passenger transport vehicles and also provides roadside assistance and financial services for people with reduced motor abilities. The programme also includes comprehensive assistance in obtaining a special driving licence from one of 13 Mobility Centres. Call the special freephone number 800838333 for more information based on your needs.







BE SEEN, EVEN WHEN YOU ARE GONE



*La meccanica delle emozioni*